

Ratnagiri Tourism Development

January 25th is marked as the India's National Tourism Day to create awareness about significance of tourism for the economy.

Tourism today is one of the major sectors in global commerce. It contributes nearly 9% of the world GDP – through direct, indirect and induced impact. It accounts for \$1.6 trn. Of world exports - 6% of the world exports. Viewing the global travel scenario, almost 30-40% of population in the US and Europe leisure travel every year, around 8% in China whereas in India this number is less than 1%. This depicts the huge growth potential of the Indian market.

Currently Indian tourism has a share of 6.7% in its GDP, which is increasing. It is roughly \$120 bn Industry, employs 37 mn people and by 2020 is stated to

become bigger than the IT industry. Judged in terms of any parameter like by type, by purpose of visit, by tourist profile, by average duration of stay, by mode of travel, competition forecast and emerging opportunities, the travel & tourism sector is expected to grow at a compound rate of over 7% during 2016-2021. Basis is raising foreign tourist footfall, robust infrastructural developments, increasing recreational tourism, growing efforts by the Centre as well as states at promoting tourism including collaborative tourism and diversified service offerings by proactive companies. With conceptualization of the iconic 'Incredible India campaign', the tourism scenario received tremendous boost.

Coming to Maharashtra, it has lately become alive to the need for boosting

tourism. Tourism can become a powerful growth engine for the Maharashtra economy only within efficient tourism infrastructure in place. Tourism & Tourism Infrastructure coverage is vast and growing. It encompasses both soft as well as physical infrastructure and contains a variety of facilities like medical & wellness tourism; adventure tourism; leisure & recreational tourism, beach tourism, Gandhian tourism, rural tourism, religious tourism, wine tourism and recently added mines tourism. All these require soft infrastructure which includes mainly governance aspects especially observance of just in time principle, least wastages, quality & suitable skills, best management norms and experience of a healthy swatch life.



Kokan Coastal Project

Kokan Integral part of state development

Konkan, a beautiful place which is as good as a paradise, a coastline at the western part of India. The sandy golden beaches with crystal clear ocean are the main attractions for all the travelers across the world to visit **Konkan at least once in a lifetime**. Konkan beaches are not typical beaches which are most crowded. You will find peace & relaxation on many of the Konkan beaches.

Ratnagiri and Sindhudurg districts have been selected for the implementation of the ambitious **Integrated Coastal Zone Management (ICZM) project** jointly launched by the union ministry of environment and forests and the World Bank. The project envisages coastal protection, community livelihood, capacity-building of coastal communities, tourism and mitigation of pollution. The Maharashtra Coastal Zone Management Authority, at its recent meeting, gave its approval at a time when

villagers from **Ratnagiri & Sindhudurg districts are stopping up their agitation against the Rs 3 lakh crore refinery project on the grounds** that it would adversely impact marine life and environment. Ratnagiri and Sindhudurg districts have been selected for the implementation of the ambitious

1. Integrated Coastal Zone Management (ICZM) project jointly launched by the union ministry of environment and forests and the World Bank. The project envisages coastal protection, community livelihood, capacity-building of coastal communities, tourism and mitigation of pollution. The Maharashtra Coastal Zone Management Authority, at its recent meeting, gave its approval at a time when villagers from Ratnagiri and Sindhudurg districts are stepping up their agitation against the Rs 3 lakh crore refinery project on the grounds that it would

adversely impact marine life and environment. The state's infrastructure arm, Maharashtra State Road Development Corporation (MSRDC) on recently issued a request for proposal to appoint consultancy services to prepare a feasibility report and detailed project report on the expressway.

2. 500-km e-way proposed along Konkan coast

Taking a cue from the previous government that led the ambitious 701-km Mumbai-Nagpur expressway or Samruddhi corridor, state government has taken the first step towards constructing a **500-km greenfield Konkan expressway**. The state's infrastructure arm, Maharashtra State Road Development Corporation (MSRDC) issued a request for proposal to appoint consultancy services to prepare a feasibility report and detailed project report on the expressway.



Kokan Coastal Project

In March, state urban development minister Eknath Shinde had announced that a greenfield expressway will be constructed along the Maharashtra coastline, connecting the three districts of Raigad, Ratnagiri, and Sindhudurg. The state is looking at starting the expressway from Chirle in Raigad where the under-construction 22km sea-bridge – the Mumbai Trans Harbour Link (MTHL) The expressway will extend till Patradevi at the Maharashtra-Goa border in Sindhudurg district. the project would help boost coastal tourism and reduce stress on the Mumbai-Goa National Highway. “The consultant will be expected to look at the feasibility of the project along with the social and environmental impact. It will also propose a financial model that can be adopted.” MSRDC has undertaken the construction of the Samruddhi corridor at Rs 55,000 crore. It will reduce travel time Mumbai & Nagpur to eight hours.

The corporation has also undertaken the construction of the Versova-Bandra sea link at Rs 7,000 crore and is looking to extend it till Virar at an additional cost of Rs 24,000 crore. Transport experts said that the expenditure on a new mega project needs to be justified by government. “Any road project means high expenditure. If the project is looking at boosting public transport, then it can benefit people. Also, the Konkan railway is still not utilised to its full potential, so there needs to be a better reason for the new project.

RECOMMENDATIONS FOR SUSTAINABLE TOURISM DEVELOPMENT IN RATNAGIRI

Public-private partnership is absolutely needed for sustaining the development of coastal tourism in Ratnagiri. Public-private partnership is needed for infrastructure development including development of accommodation, transport, site development, other

amenities, etc. A programme of public private partnership is also essential for waste management, prevention of pollution and protecting the tourism environment. Tourists today wish to have certain experiences related with the tourism destination cultural. Innovative accommodation structures related to the traditional which provides authentic tourist experiences. Therefore, creation of traditional type of home which is made from mud, stone with a tiled roof, cow dung washed floor and a personal Veranda. Make huts with coconut palm leaf using for roof or bamboo separate standardized rooms for increase in standard of hospitality. In addition, only ethnic food provides to tourist which will be cooked on a mud-stove called Chulha, and served upon banana leaves. The ingredients used are all grown in the village itself. Because of this urban people can complete their dream of Konkani lifestyle.

CONCLUSIONS

The study reveals that tourist most attraction is natural environment, cultural places, pilgrimage spot. This is the advantage Ratnagiri has more potential for tourism development and no doubt. During research there are some problems and an impediment has been identified. Some recommendations also mention above. We consider the suggestions given above then surely Ratnagiri will develop as tourism economic sustainability, environmental sustainability, Social sustainability and cultural sustainability. If tourism well planned it help raise income and surely help in creating job opportunities for youth of Ratnagiri which will reduce their migration to nearby cities. When tourism activities are initiated local people do interact with different culture, care must be taken that tourism activity will not generate any illegal, unethical activity.

India to step up measures for tourist safety

The tourism sector is an important one for the Indian economy. India are now ready to consider booking domestic and international trips, but only if airlines, airports, hotels and car rental companies collectively implement 10 different safety measures throughout their journey, which includes fully flexible or refundable flight tickets. Furthermore, demand for almost every safety measure is highest in India, of the five countries surveyed. This is according to the results of new independent research released today by Travelport, based on a survey of 5,000 travelers across India, UK, US, Australia and New Zealand, as well as in-depth interviews with 29 leading travel suppliers.

The study found that at all parts of the travel journey, it was deemed critical to have social distancing rules, mandatory

use of face masks, and ready access to sanitizing gel or wipes, face masks and gloves. The study also revealed, however, that additional measures still need to be implemented by airlines, airports, hotels and car rental companies to fully restore consumer confidence. The 10 separate safety measures participants of the study said they need to know have been adopted by airports, airlines, hotels and car rental companies for those travelers to consider domestic and international travel.

1. Enhance Cleaning
2. Access to face mask, gloves, sanitising.
3. Social and Physical distancing
4. Temperature checks
5. Mandatory of wearing mask.
6. Fully flexible refundable tickets.
7. Improved Air Filteation
8. Contactless services
9. Plexi glass check in
10. Managing boarding by row.

An Insight into Ratnagiri Tourism

The city of Ratnagiri is situated along the Konkan coast and is a very popular travel destination in Maharashtra. The name “Ratnagiri” means ‘jewel of hills’ in the Marathi language. The city is well known for its wealth of natural beauty in the forms of seashores, hot springs, caves, rivers & waterfalls. The beaches along the Konkan coast, some of them being extremely long, are one of the main reasons behind this very attractive holiday destination. Other than the exuberant natural features of this city, the Ratnagiri tour also involves a certain religious attribute. This coastal city is the home to some of the prehistoric Hindu temples of India, which attract a big crowd of pilgrims. These temples include the Keshavraaj Temple, the Swayambhu Ganpati Temple near the Ganapatipule Beach and also, the

Kadyavarcha Ganpati Temple, near Dapoli. The aforementioned temples are deemed to be popular tourism places by history lovers and pilgrims alike. Other worthy of mention tourist attractions in and around the city of Ratnagiri would be the Thiba Palace, the Suvarnadurg and Kanakdurg Forts, the Ratnadurg Fort, the Unhavare natural hot water spring, the Ganapatipule beach, the Panhalekaji caves, the Gateway of Ratnagiri, the Murud beach and the Rajapur Ganga. These sightseeing places interest crowds, including historians, pilgrims, art lovers and nature lovers to name a few. The mostly tropical weather of Ratnagiri is very favorable for the production of ‘Hapus’ or the Alphonso Mango. This variety of mango is the costliest of its kind and is of immense trade value, mostly outside the country.

The heavy rainfall and alluvial soil of this region also facilitate the growth of rice, coconut, cashew nuts and a variety of fruits. Fishing is an important industry in Ratnagiri. There is a research centre called the Marine Biological Research Station, under the Government of Maharashtra, which aims to come up with ingenious methods of fish culture. For people residing nearby, a weekend’s getaway to this serene and charismatic land would surely relieve them from all worldly troubles. For people staying further away, an extensive touring in Ratnagiri would definitely prove to be a fruitful, satisfying and memorable experience. Our detailed holiday guide can help you choose your kind of holiday in Ratnagiri by providing you information that you can trust.



Top Beaches In Ratnagiri

The Ratnagiri district is famous for its religious and historical sites and the beautiful nature. It is also adorned with beautiful scenic beaches. These are the best beaches in Ratnagiri which one cannot miss while exploring this city of Maharashtra. Offering breathtaking vistas of the Arabian Sea, the shimmering coastline of Maharashtra is home to many beautiful cities that boast of pristine beaches for a perfect laid-back vacation. And one such enchanting destination is that of Ratnagiri.

Being a popular getaway located in the southwestern region of Maharashtra, this port city encompasses the best Ratnagiri beaches that are still unexplored to a great extent and are a must-visit for all travelers alike. These beaches offer a beautiful view to enjoy and the wilderness which can be a relaxing vacation idea.

Beaches

- Ganapatipule Beach
- Pandre Beach
- Kunkeshwar Beach
- Bhatye Beach
- Guhagar Beach
- Aare Ware Beach
- Anjarle Beach
- Velas Beach
- Murud Beach

Kokan Coastal Project



Ganpatipule Beach



Ganpatipule is a town on the Konkan Coast of western India. It's known for its beaches, such as Ganpatipule Beach and nearby Aare Ware Beach. On Ganpatipule Beach, the centuries-old Swayambhu Ganpati Temple is a pilgrimage site and houses a large orange statue of Ganesh. Prachin Konkan is an open-air museum with models depicting traditional Konkan life. Jaigad Fort and a British-built lighthouse lie to the north of this beach. village that generally brightens and enliven up during festive seasons like Ganesh Chaturthi or Diwali.

Pandre Beach



The beach is hardly a kilometer away from the main bus stand but to reach this place is quite difficult. So it would be good to take the help of a local to know about the easiest access to beach. Pandre Samudra is a popular beach in Maharashtra, located near to the Ratnagiri town. Pandre Samudra means 'white sea' and is named so because of the silvery sand and clear emerald waters. Nearest beaches like Mirkarwada, and Mandvi. Also, a visit to the Sai Mandir, which is quite close to the beach, can be considered.

Kunkeshwar Beach



Kunkeshwar beach is a shoreline to the popular and exotic Kunkeshwar village. The village is located in Sindhudurg district of Maharashtra. Kunkeshwar temple is commonly known as Konkan Kashi. Possessing a 700-meter-long mesmerizing coastline, Kunkeshwar beach is one of the serene and most quiet beaches of the vast stretches of headlands, the gushing waves, the windy breeze, all the facets set the beach apart from the common crowded ones. Green foliage of coconut and mango trees that surrounds the Kunkeshwar beach adds to the scenic beauty of the location.

Swimming and Dolphin watching are few of the activities observed at Kunkle beach.

Kokan Coastal Project



Bhatye Beach



Bhatye beach is just 1 km away from Ratnagiri city. This straight and flat beach is approximately 1.5 kms long where you can enjoy the natural beauty at its optimum. Bhatye Beach (though the two beaches are separated by a creek) and the Ratnagiri light house. To know more about coconuts and what agricultural research has been done in the related fields, you can head straight to Konkan Krishi Vidyapeeth's Coconut Research Center that's located opposite Bhatye beach. The famous Ganeshji Temple (Zari Vinayak) located at the beach

Guhagar Beach



An oasis of small beaches, Guhagar is a town in Ratnagiri district of Maharashtra. The place is situated on the banks of Vashishti river. Guhagar Beach is one of the most famous Ratnagiri beaches boasting of a 6 km long stretch of clear water, glistening white sand and the sparkling golden sand is seen from the forests of Casuarina locally known as Suru tree, Suru and coconut trees lined across the shore. Time flies when you experience the feel of the velvety soft sand under your feet. Guhagar is known for its virgin beach, coir items, coconuts, betel nuts, the Guhagar seashore looks stunning if you are standing in the coconut groves.

Aare Ware Beach



Aare-Ware Beach is located around 8km from Ganapatipule. Here the sea is also very calm and ideal for swimming. The hilly road curved down from a hill and we reached a point named 'Aare Ware viewpoint' Two unspoiled virgin beaches located near Nevare village, Aare Ware is one of the most scenic Ratnagiri beaches having earned the reputation of being completely garbage free. It is surrounded by greenery and a dense plantation of Suru trees at the shore. There is no sewage or waste drainage in this part of the sea. Covered with smooth, golden sand, the beach offers magnificent views of the sunset over the azure waters of the Arabian Sea. You can enjoy an impressive view from the nearby Aare Ware point located on the

Kokan Coastal Project



Anjarle Beach



Anjarle is a village in the Dapoli taluka of Ratnagiri district in the Maharashtra state of India. Apart from the nearby Ganapati temple which is known as 'Kadyavarcha Ganpati', Anjarle is known for its unspoiled beach. As one heads north from Dapoli, a beautiful turn of the road to the mountain takes you towards the Aanjarle village. Once you cross the mountain, a riveting view welcomes you with all its pomp and serenity. By taking this same road, one land on the Anjarle beach, maintained its reputation of being one of the cleanest and unpolluted beaches in Ratnagiri.

Velas Beach



Velas Beach is a popular eco-tourism site on Maharashtra's stunning Konkan coast, which is at the beginning of the UNESCO World Heritage. Since many years, the female Olive Ridley Turtles come to the Velas beach to lay eggs in the breeding season. After ensuring the safety of these eggs the villagers celebrate the Turtle Festival each year, the tiny village of Velas, in Maharashtra, bears witness to a truly heart-warming sight as thousands of newly hatched Olive Ridley turtles take their first steps towards the big blue sea. This Eco Tourism in Velas is offering a good source of income for the local and also the turtle conservation activity.

Murud Beach



Murud is a small yet developed village at a distance of 11 km from Dapoli. Murud beach is also known as Murud Harnai beach. It is a long, scenic stretch of a beach. The beach is immensely beautiful and full of fun. There is also an ancient Durga Devi temple near the Murud beach. This ancient temple was built in the 18th century and the carvings on the wood of the temple Murud Dapoli beach has lots of water rides and water sports. There are banana rides, jet rides, water bike rides, parasailing, etc., there are a lot of good resorts near the beach. There is a museum dedicated to Maharshi Karve. He was the one who established the very first Indian institute for women.

Kokan Coastal Project



the sea serenades, and has been the principal catalyst and driver of development – with trade flourishing in these port cities.



Kokan Coastal Project



your canvas, your magination. Cleanly cut and easily demarcated, thoughtfully interspersed with an integration in the residential gated community, with lots of open green spaces



Kokan Coastal Project



Inspired by elements from the Western Ghats, a delightful intersection of the sea
an origin story of its own.



Kokan Coastal Project



incredible panoramic vistas and a number of unexplored beaches.



Kokan Coastal Project



THE SEA – The oldest sanctuary through time.

Since time immemorial, there has been an inexplicable allure, a wordless passion man has nursed – for the azure draw of the sea. Life by the seashore, an easy escape from the material



Kokan Coastal Project



Seaside lifestyle plots at 'Nature's best kept secret' -

An invaluable opportunity to book into the best time-tested asset class



Kokan Coastal Project



incredible panoramic vistas and a number of unexplored beaches.



Kokan Coastal Project



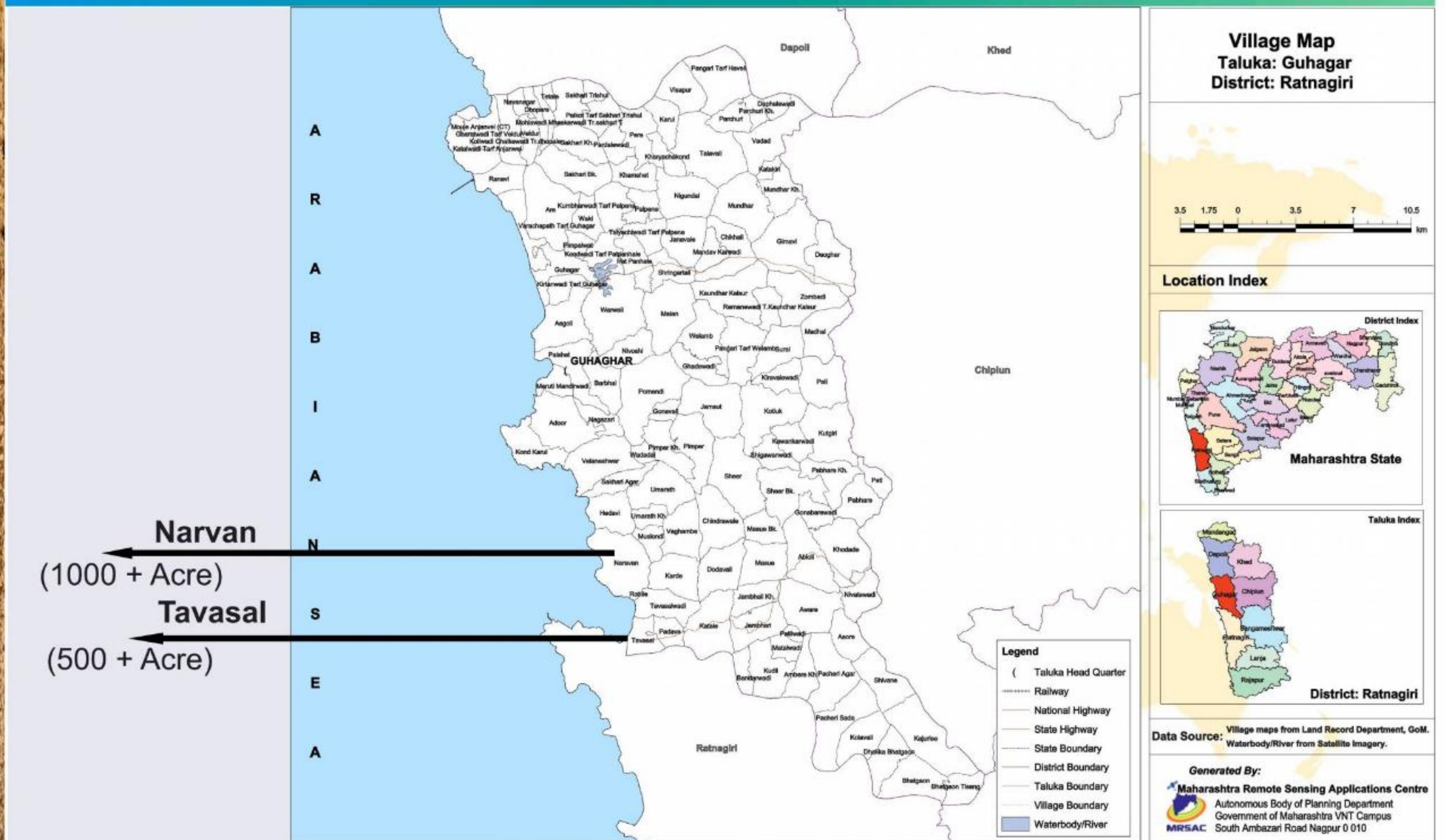
incredible panoramic vistas and a number of unexplored beaches.



Kokan Coastal Project

GUHAGAR

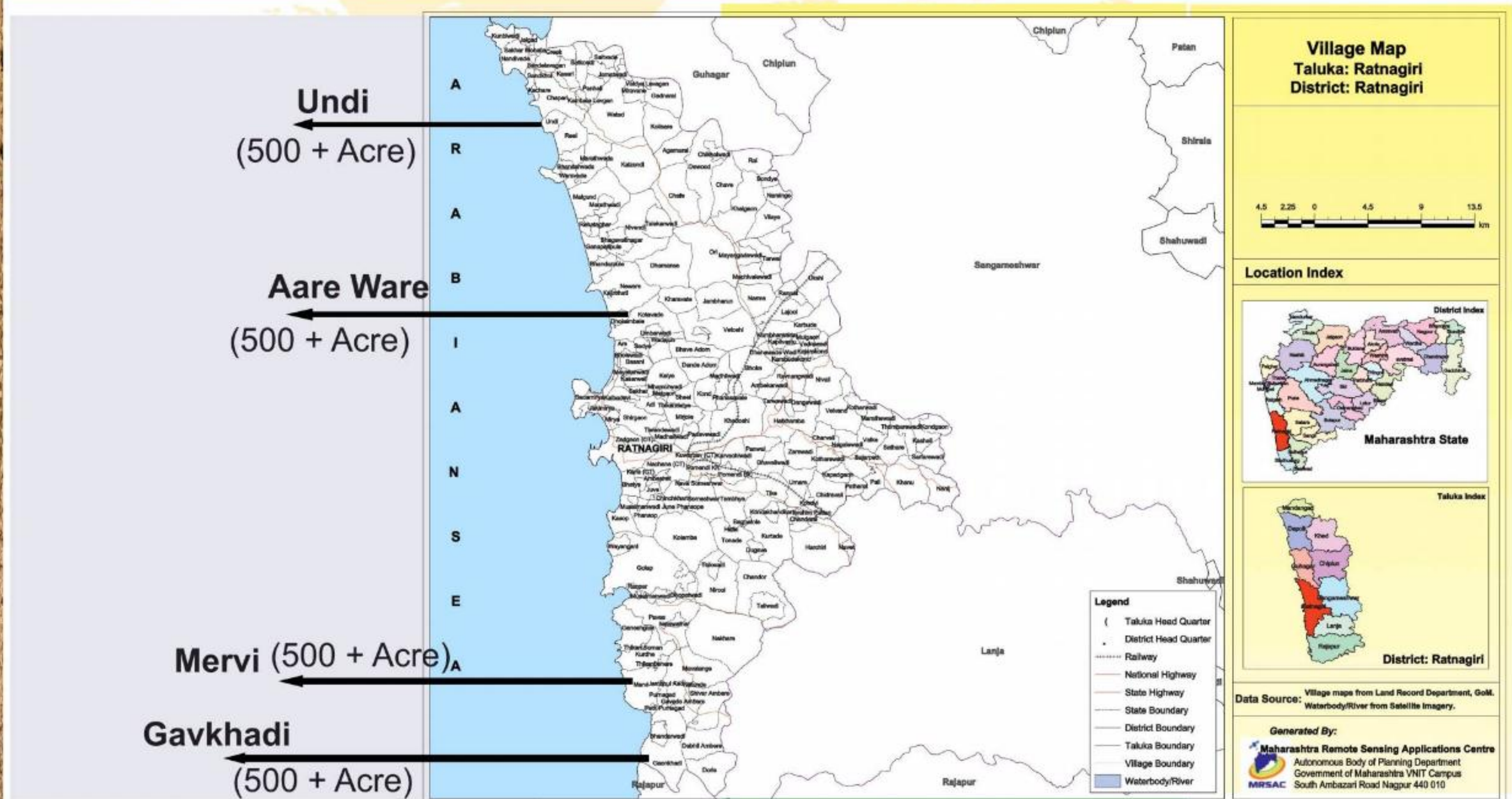
Guhagar beach is a nice place to visit over a weekend. It has a long Velvate beachline



Kokan Coastal Project

TALUKA : RATNAGIRI

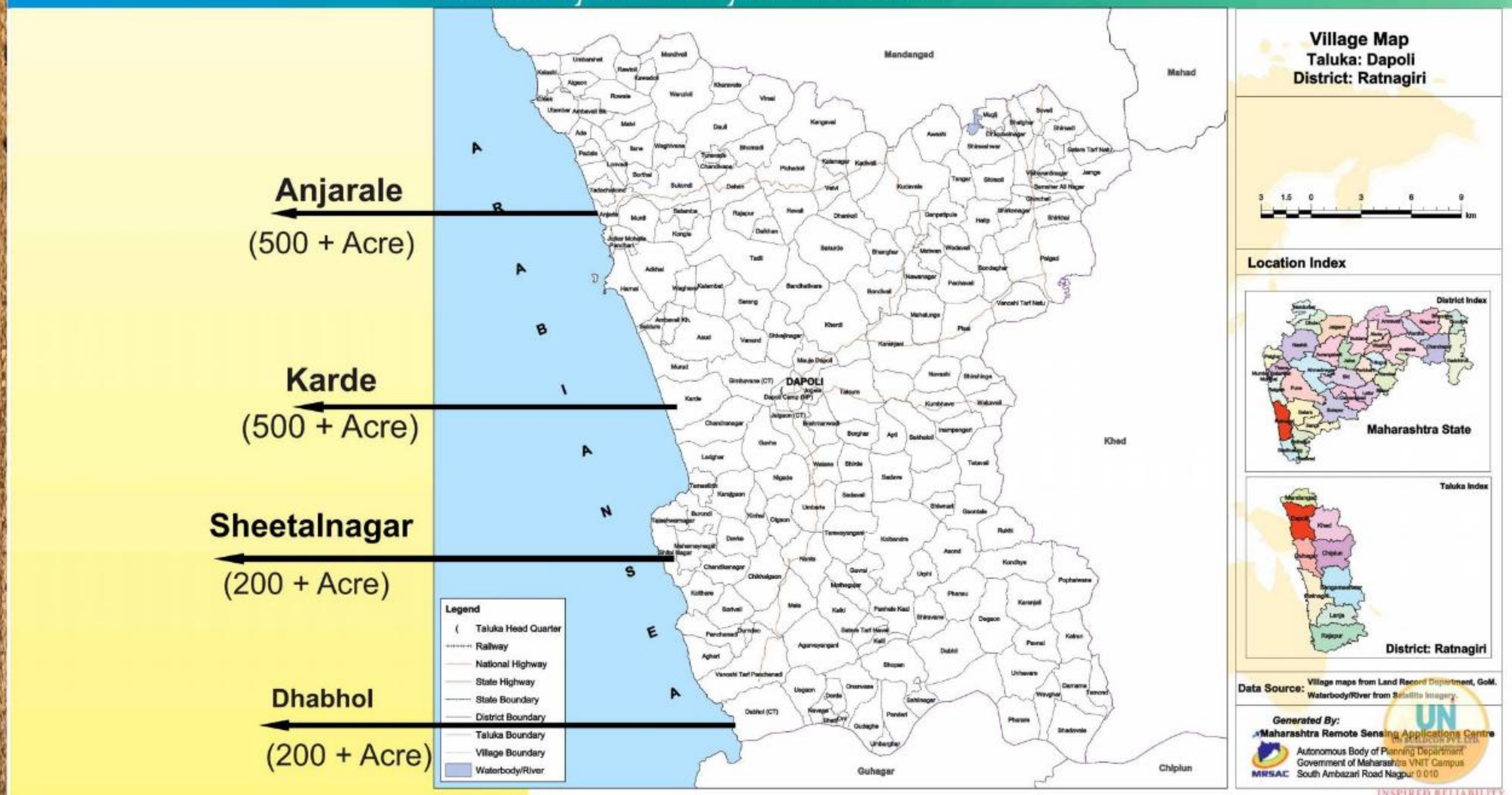
Ratnagiri is a coastal district of Maharashtra state, situated in the western coast of India. It has north-south length of about 180 km and average east-west extension of about 64 km.



Kokan Coastal Project

TALUKA : DAPOLI

Dapoli has a seaboard of 50 km (31 mi) which stretches from Velas, Maharashtra Velas - Kelshi in the North to Dabhol in the South. The coastline differs little in its general characteristics from that of other parts of Konkan. It is densely covered by coconut farms.



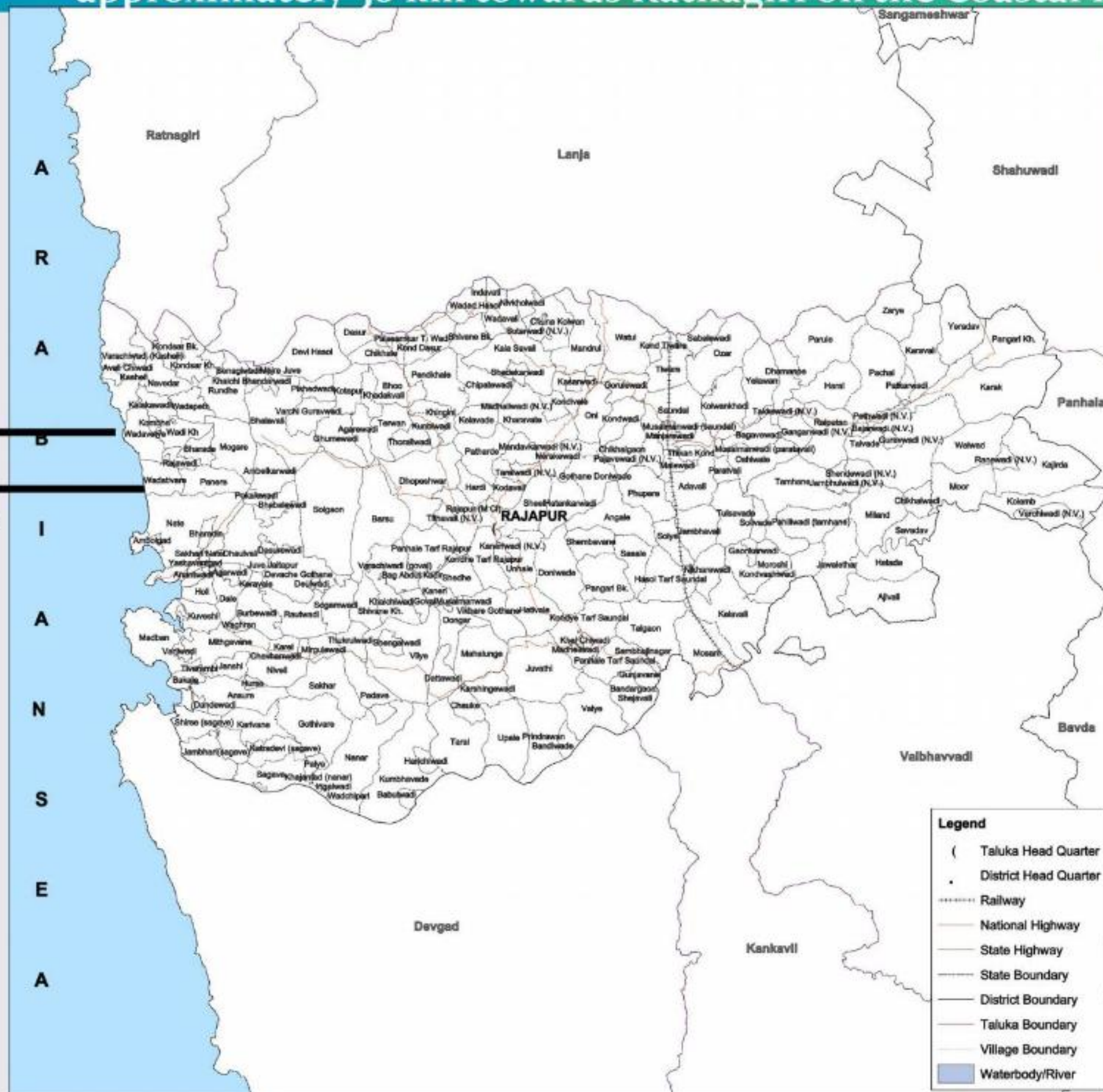
Kokan Coastal Project

TAL. : RAJAPUR

Rajapur has an average elevation of 72 metres (236 feet). ... a distance of approximately 30 km towards Ratnagiri on the Coastal Highway

Wada Vetye
(1000 + Acre)

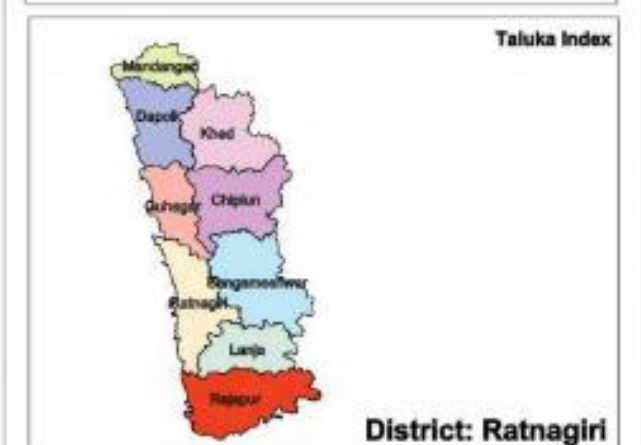
Wada Tiware
(1000 + Acre)



Village Map
Taluka: Rajapur
District: Ratnagiri



Location Index



Data Source: Village maps from Land Record Department, GoM.
Waterbody/River from Satellite Imagery.

Generated By:
Maharashtra Remote Sensing Applications Centre
Autonomous Body of Planning Department
Government of Maharashtra VNIT Campus
South Ambazari Road Nagpur 440 010

Kokan Coastal Project

WADA Vetye (Area 1000 Acre +)

Locality Name : Wada Wetye
Taluka Name : Rajapur
District : Ratnagiri
State : Maharashtra
Region : Konkan
Elevation / Altitude: 41 meters. Above Seal level
Telephone Code / Std Code: 02353

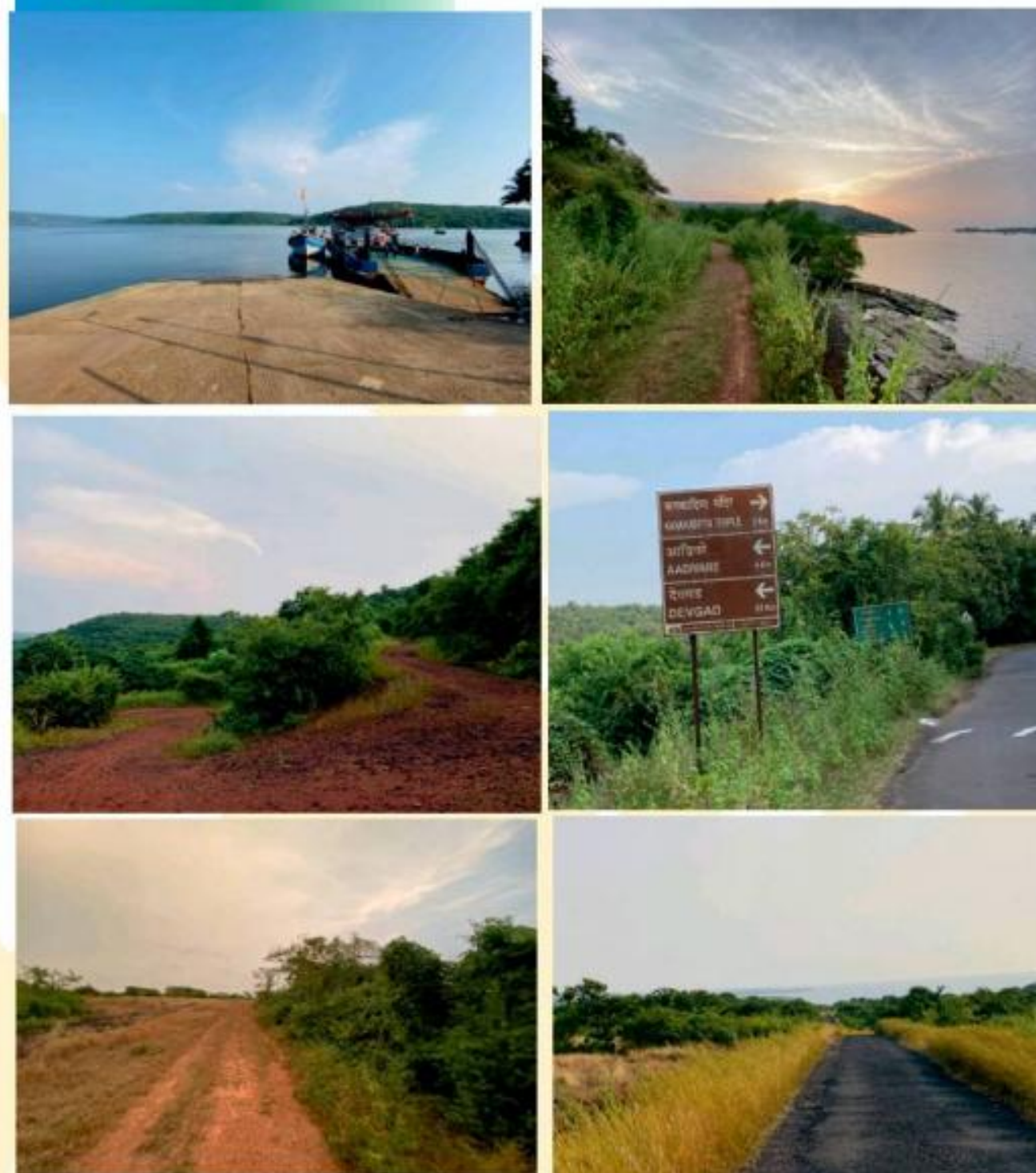
Wada Wetye is a small Village/hamlet in Rajapur Taluka in Ratnagiri District of Maharashtra State, India. It comes under Wada Wetye Panchayath. It belongs to Konkan region . It belongs to Konkan Division . It is located 51 KM towards South from District head quarters Ratnagiri. 317 KM from State capital Mumbai

Wada Wetye is surrounded by Lanja Taluka towards North , Deogad Taluka towards South , Vaibhavawadi Taluka towards East , Ratnagiri Taluka towards North .

Devgarh , Ratnagiri , Kolhapur , Uchgaon are the near by Cities to Wada Wetye.

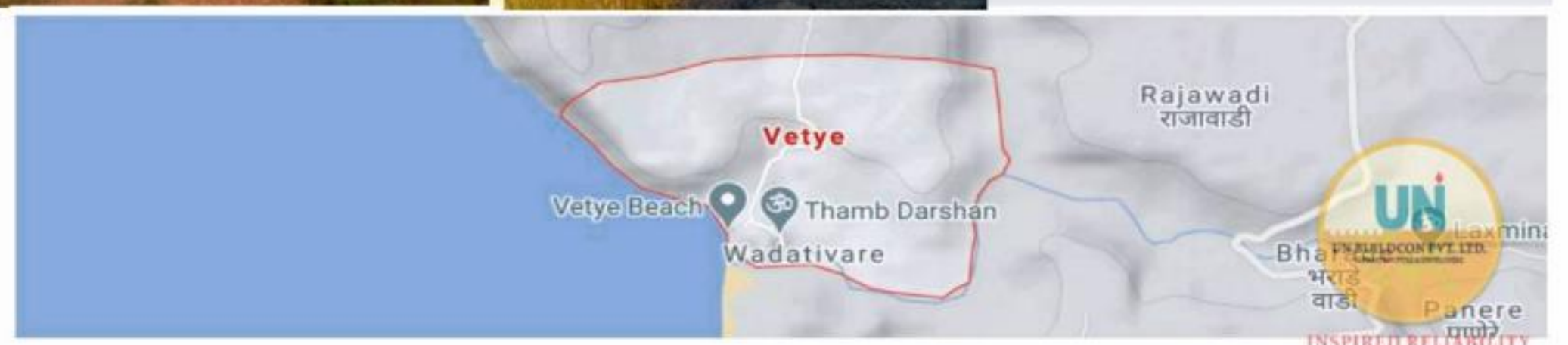
It is near to arabian sea. There is a chance of humidity in the weather.

SITE IMAGES



ABOUT WADA TIWARE

Wada Vetye beside to Wada Tiware and is surrounded by Lanja Taluka towards North , Deogad Taluka towards South , Vaibhavawadi Taluka towards East , Ratnagiri Taluka towards North . Devgarh , Ratnagiri , Kolhapur , Uchgaon are the near by Cities to Wada Tiware. It is near to arabian sea. There is a chance of humidity in the weather.. Beaches are total white sand and long plain plateu along to sea coastal side.



Kokan Coastal Project



WADA VETYE, RATNAGIRI

HOW TO REACH Wada Tiware

By Rail

There is no railway station near to Wada Wetye in less than 10 km. Ratnagiri Rail Way Station (near to Ratnagiri) are the Rail way stations reachable from near by towns.

By Road

Rajapur , Ratnagiri are the nearby by towns to Wada Wetye having road connectivity to Wada

NEAREST PLACES

Near Cities

Devgarh 59 KM near
Ratnagiri 49 KM near
Kolhapur 145 KM near
Uchgaon 90 KM near

Near By Talukas

Devgarh 60KM near
Ratnagiri 48 KM near
Kolhapur 15145 KM near
Uchgaon 145 KM near

Near By Air Ports

Kolhapur Airport 15 oKM
Dabolim Airport 221KM
Sindhudurg 70 KM near
CST Airport 360 KM
Lohegaon Airport 343 KM

Near By Tourist Places

Vijaydurg 25 KM near
Kunkeshwar 43 KM
Ratnagiri 49 KM near
Dajipur Wildlife Sanctuary 51 KM

Near By Districts

Ratnagiri 32 KM near
Sindhudurg 70 KM near
Kolhapur 86 KM near
Sangli 128 KM near

Near By RailWay Station

Savarda Station 33 KM
Ratnagiri 49 KM near
Sindhudurg 70 KM near
Kolhapur 86 KM near

Near By RailWay Station

Rajapur Road Station 13 KM
Vilavade Station 19 KM

LOCATION MAP



SATELLITE IMAGES



16°41'19.1"N 73°19'57.1"E



Kokan Coastal Project



WADA TIWARE (Area 1000 Acre +)

Locality Name : Wada Tiware
Taluka Name : Rajapur
District : Ratnagiri
State : Maharashtra
Region : Konkan
Elevation / Altitude: 41 meters. Above Seal level
Telephone Code / Std Code: 02353

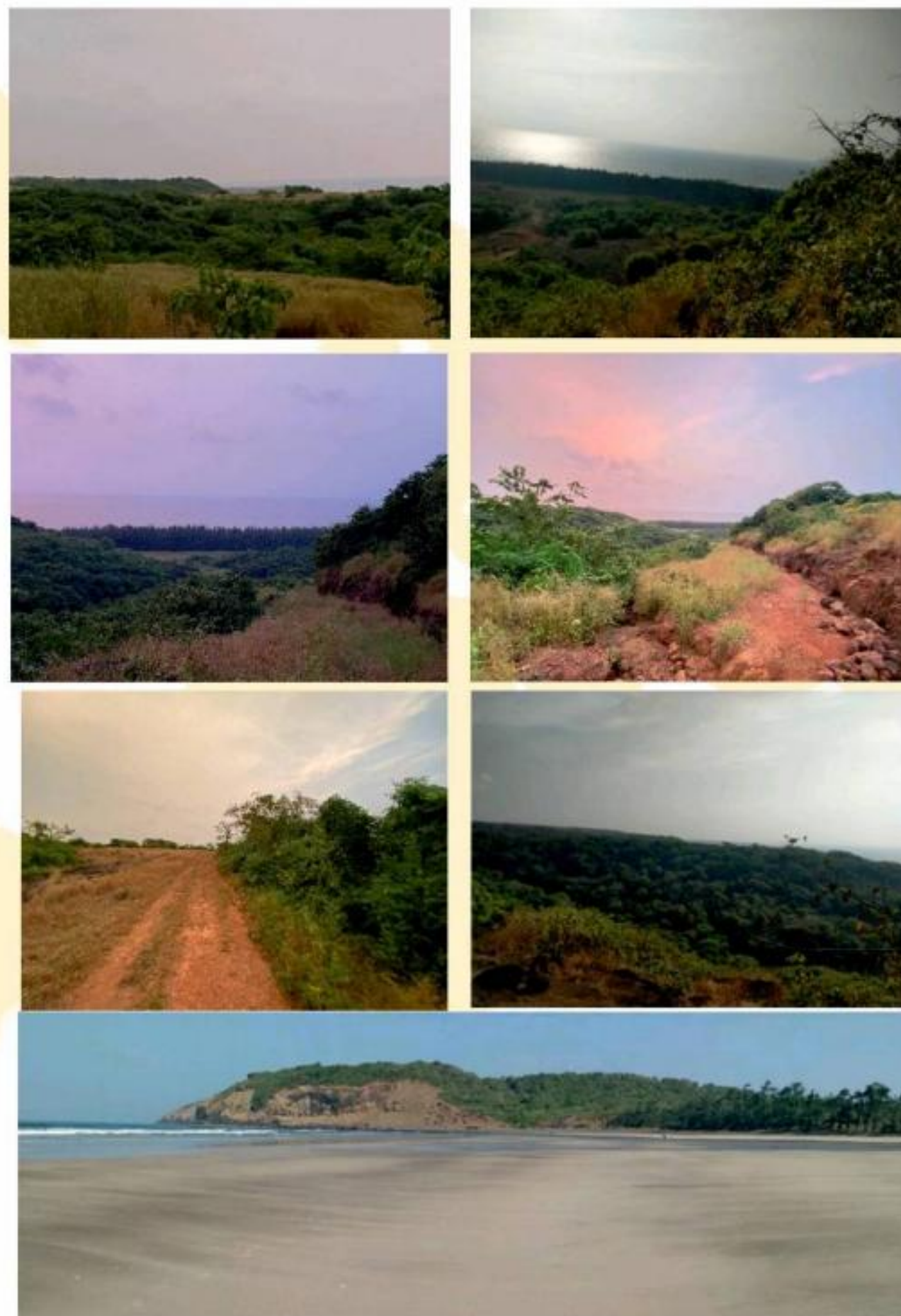
Wada Tiware is a small Village/hamlet in Rajapur Taluka in Ratnagiri District of Maharashtra State, India. It comes under Wada Tiware Panchayath. It belongs to Konkan region . It belongs to Konkan Division . It is located 51 KM towards South from District head quarters Ratnagiri. 317 KM from State capital Mumbai Wada Tiware Pin code is 416707 and postal head office is Adivare .

Wada Tiware is surrounded by Lanja Taluka towards North , Deogad Taluka towards South , Vaibhavawadi Taluka towards East , Ratnagiri Taluka towards North .

Devgarh , Ratnagiri , Kolhapur , Uchgaon are the near by Cities to Wada Tiware.

It is near to arabian sea. There is a chance of humidity in the weather.

SITE IMAGES



ABOUT WADA TIWARE

Wada Tiware is surrounded by Lanja Taluka towards North , Deogad Taluka towards South , Vaibhavawadi Taluka towards East , Ratnagiri Taluka towards North . Devgarh , Ratnagiri , Kolhapur , Uchgaon are the near by Cities to Wada Tiware. It is near to arabian sea. There is a chance of humidity in the weather.. Beaches are total white sand and long plain plateu along to sea coastal side.



Kokan Coastal Project



WADA TIWARE, RATNAGIRI

HOW TO REACH Wada Tiware

By Rail

There is no railway station near to Wada Tiware in less than 10 km. Ratnagiri Rail Way Station (near to Ratnagiri) are the Rail way stations reachable from near by towns.

By Road

Rajapur , Ratnagiri are the nearby by towns to Wada Tiware having road connectivity to Wada Tiwares to Sindhudurg 70 KM near arvan having road connectivity to Narvan

NEAREST PLACES

Near Cities

Devgarh 39 KM near
Ratnagiri 49 KM near
Kolhapur 83 KM near
Uchgaon 90 KM near

Near By Talukas

Devgarh 39 KM near
Ratnagiri 49 KM near
Kolhapur 83 KM near
Uchgaon 90 KM near

Near By Air Ports

Kolhapur Airport 97 KM
Dabolim Airport 163 KM
Sindhudurg 70 KM near
Sambre Airport 164 KM
Lohegaon Airport 243 KM

Near By Tourist Places

VVijaydurg 25 KM near
Kunkeshwar 43 KM
Ratnagiri 49 KM near
Dajipur Wildlife Sanctuary 51 KM

Near By Districts

Ratnagiri 49 KM near
Sindhudurg 70 KM near
Kolhapur 86 KM near
Sangli 128 KM near

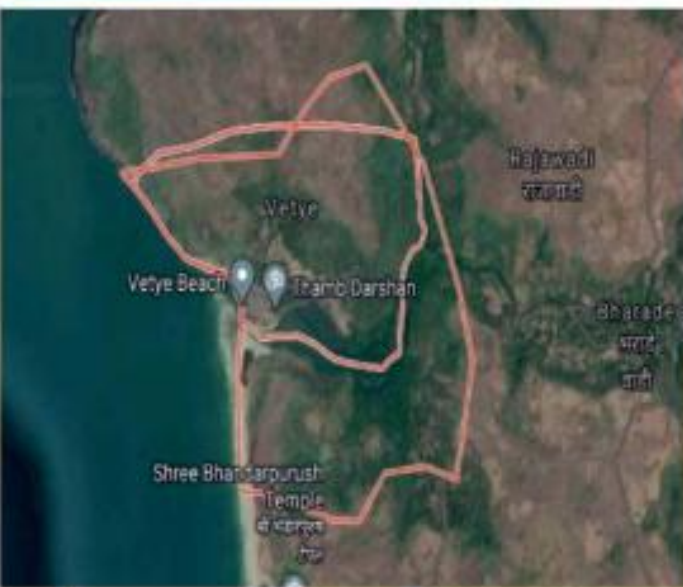
Near By RailWay Station

Savarda Station 33 KM
Ratnagiri 49 KM near
Sindhudurg 70 KM near
Kolhapur 86 KM near

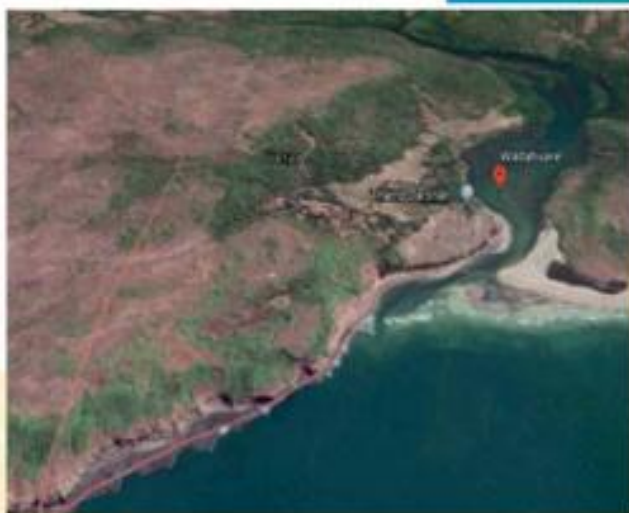
Near By RailWay Station

Rajapur Road Station 13 KM
Vilavade Station 19 KM

LOCATION MAP



SATELLITE IMAGES



16°41'19.1"N 73°19'57.1"E

INSPIRED RELIABILITY

Kokan Coastal Project



GAVKHADI

(Area 500 Acer +)

Locality Name : Gavkhadi
Taluka Name : Rajapur
District : Ratnagiri
State : Maharashtra
Region : Konkan
Elevation / Altitude : 129 meters. Above Seal level
Telephone Code / Std Code: 02352

Gavkhadi is a Village in Ratnagiri Taluka in Ratnagiri District of Maharashtra State, India. It belongs to Konkan region . It belongs to Konkan Division . It is located 24 KM towards South from District head quarters Ratnagiri. 25 KM from Ratnagiri. 293 KM from State capital Mumbai Gavkhadi Pin code is 415626 and postal head office is Gavkhadi.

Gavadeambere (2 Km) , Mervi (4 Km) , Dorle (5 Km) , Kondsar Bk. (6 Km) , Shivarambere (7 Km) are the nearby Villages to Gavkhadi. Gavkhadi is surrounded by Lanja Taluka towards East , Rajapur Taluka towards East , Deogad Taluka towards South , Sangmeshwar Taluka towards North.

Ratnagiri , Devgarh , Chiplun , Kolhapur are the near by Cities to Gavkhadi.

It is near to arabian sea. There is a chance of humidity in the weather.

SITE IMAGES



Gavkhadi Beach



ABOUT GAVKHADI

You can see the dense Casuarina forests on your right side while traveling from Ratnagiri on the Rajapur road, after crossing Purnagad's creek bridge. The sparkling sea waves seen through the Casuarina trees are bound to allure everyone and your feet unknowingly turn towards Gavkhadi's beautiful beach. At the beach, one can see a dense cover of coconut trees where local birds greet every visitor with their sweet twittering. One must lose oneself to find serenity at such places of natural richness on the narrow Konkan strip. The Gavkhadi beach is approximately 1km long, and you can see the entire Purnagad fort from the backwaters of the Muchkundi River which is situated to the right of the Gavkhadi beach. in the dense Suru forests. The distance between Pawas and Gavkhadi is 9kms



INSPIRED RELIABILITY



GAVKHADI

TAL.: RAJAPUR DIST. RATNAGIRI

How to reach Gavkhadi

By Rail

There is no railway station near to Gavkhadi in less than 10 km. Ratnagiri Rail Way Station (near to Ratnagiri) are the Rail way stations reachable from near by towns.

By Road

Ratnagiri are the nearby by towns to Gavkhadi having road connectivity to Gavkhadi

NEAREST PLACES

Near Cities

Ratnagiri 26KM near
Devgarh 54 KM near
Chiplun 92 KM near
Kolhapur 108 KM near

Near By Talukas

Ratnagiri 25 KM near
Lanja 27 KM near
Rajapur 30 KM near
Deogad 51 KM near

Near By Air Ports

Kolhapur Airport158 Km
Dabolim Airport 225 Km
CST Airport 370 Km
Lohegaon Airport 231 Km

Near By Tourist Places

Ratnagiri 26 KM near
Vijaydurg 60 KM near
Kunkeshwar 72 KM near
Velneshwar 88 KM near
Dajipur Wildlife Sanctuary 110 KM near

Near By Districts

Ratnagiri 25 Km
Sindhudurg 96 Km
Kolhapur 155 Km

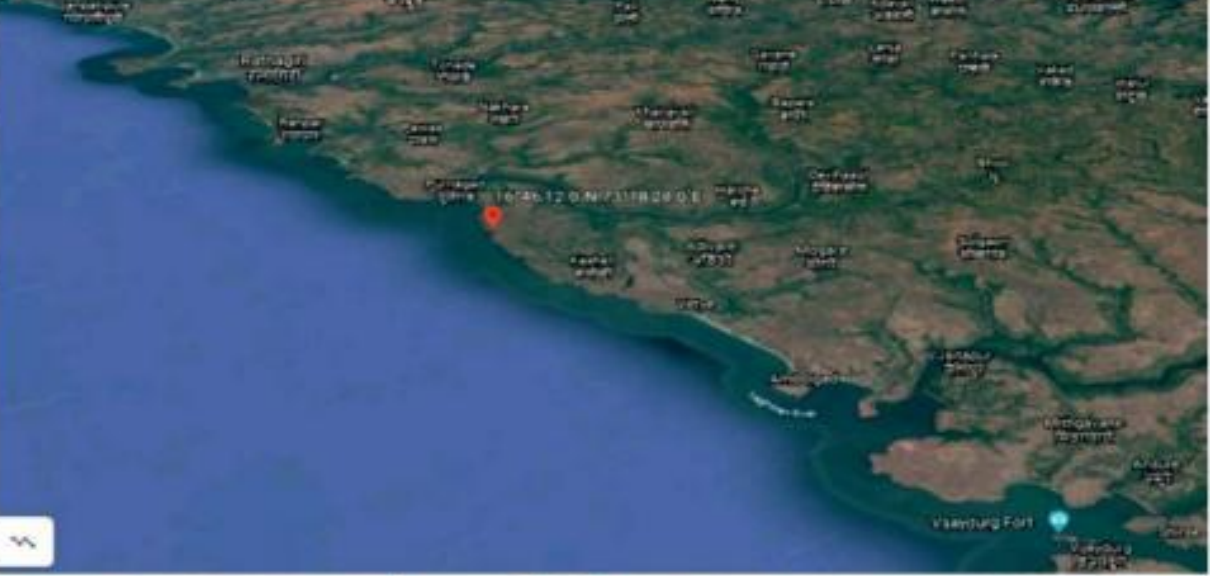
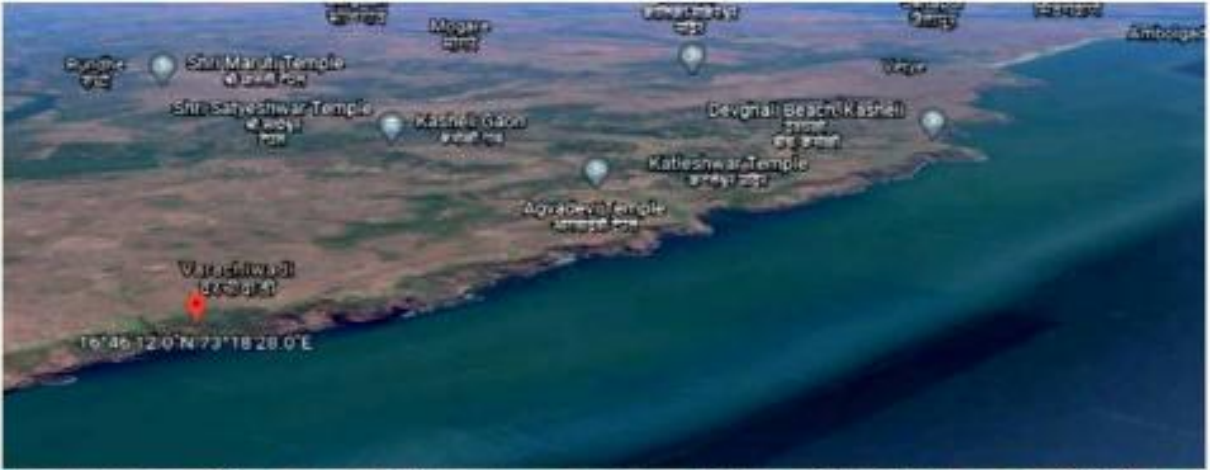
Near By RailWay Station

Satara 205 Km
Ratnagiri Station 24 Km
Adavali Station 35 Km

LOCATION MAP



SATELLITE IMAGES



16°46'12.0"N 73°18'28.0"E



INSPIRED RELIABILITY

Kokan Coastal Project



MERVI RATNAGIRI AREA 500 + ACRE)

Locality Name : Mervi
Taluka Name : Ratnagiri
District : Ratnagiri
State : Maharashtra
Region : Konkan
Elevation / Altitude : 129 meters. Above Seal level
Telephone Code / Std Code: 02352

Mervi is a Village in Ratnagiri Taluka in Ratnagiri District of Maharashtra State, India. It belongs to Konkan region . It belongs to Konkan Division . It is located 19 KM towards South from District head quarters Ratnagiri. 22 KM from Ratnagiri. 288 KM from State capital Mumbai

Mervi Pin code is 415616 & postal head office is Pawas Purnagad (4 KM) , Gavkhadi (4 KM) , Pawas (5 KM) , Golap (6 KM) , Shivarambere (8 KM) are the nearby Villages to Mervi. Mervi is surrounded by Lanja Taluka towards East , Rajapur Taluka towards East , Sangmeshwar Taluka towards North , Deogad Taluka towards South .

Ratnagiri , Devgarh , Chiplun , Kolhapur are the near by Cities to Mervi.

It is near to arabian sea. There is a chance of humidity in the weather.

SITE IMAGES



ABOUT MERVI

MERVI Village MERVI Panchayat RATNAGIRI is situated in Ratnagiri District. People of this village are living in very peaceful manner. This village having very proud history. Agriculture is the main profession of this village. Still this village is waiting for Industrial development. Education, Drinking water, Road and Electricity are the main concern of this village. Young generation is more attracted towards technology these days. If banks and finance institutions proved loan and other financial support to the villagers, this village will see the real development. Medical and health services has to be improved.

NOTE : Mervi Villgae having proposed Jetty Project this will boost and underline development in future.





MERVI
RATNAGIRI

HOW TO REACH MERVI

By Rail

There is no railway station near to Mervi in less than 10 km. Ratnagiri Rail Way Station (near to Ratnagiri) are the Rail way stations reachable from near by towns.

By Road

Ratnagiri are the nearby by towns to Mervi having road connectivity to Mervi

NEAREST PLACES

Near Cities

Ratnagiri 20 KM near
Devgarh 58 KM near
Chiplun 120 KM near
Kolhapur 121 KM near

Near By Talukas

Ratnagiri 21 KM near
Lanja 29 KM near
Rajapur 34 KM near
Sangmeshwar 65 KM

Near By Air Ports

Kolhapur Airport 150 KM
Dabolim Airport 230 KM
Lohegaon Airport 325 KM
CST Mumbai Airport 370 Km

Near By Tourist Places

Ratnagiri 21 KM near
Vijaydurg 35 KM near
Kunkeshwar 64 KM near
Velneswar 68 KM near
Guhagar 81 KM near

Near By Districts

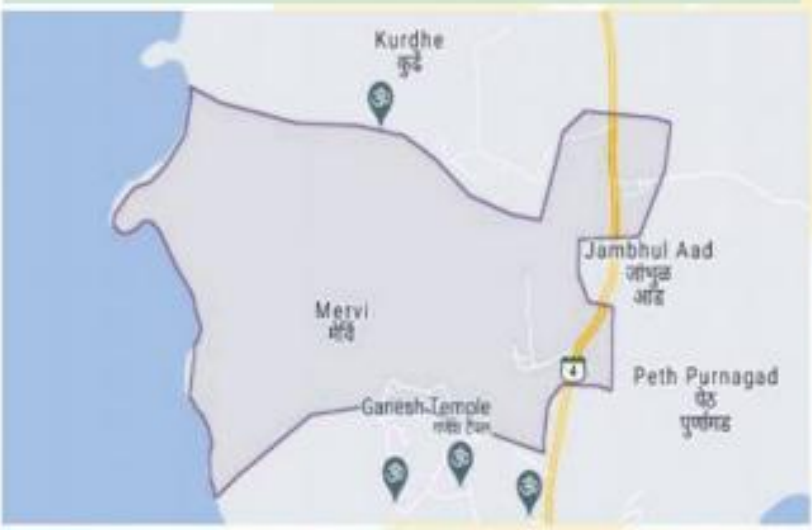
Ratnagiri 18 KM near
Satara 134 KM near
Kolhapur 114 KM near
Sindhudurg 101 KM near

Near By RailWay Station

Ratnagiri Station 21 KM
Adavali Station 36 KM

LOCATION MAP

Taluka Index District: Ratnagiri



SATELLITE IMAGES



16°50'13"N 73°18'11"E



INSPIRED RELIABILITY

Kokan Coastal Project



UNDI

RATNAGIRI (AREA 200 + ACRE)

Locality Name : Undi
Taluka Name : Ratnagiri
District : Ratnagiri
State : Maharashtra
Region : Konkan
Elevation / Altitude: 129 meters. Above Seal level
Telephone Code / Std Code: 02352

Undi, is a small Village/hamlet in Ratnagiri Taluka in Ratnagiri District of Maharashtra State, India. It comes under Local Panchayath. It is located 32 KM towards North from District head quarters Ratnagiri. 33 KM from Ratnagiri. 236 KM from State capital Mumbai

Ratnagiri , Chiplun , Mahabaleswar , Karad are the near by Cities to Undi. It is near to arabian sea. There is a chance of humidity in the weather.

Near Cities

Ratnagiri 31 KM near
Chiplun 49 KM near
Mahabaleswar 98 KM
Karad 105 KM near

Near By Taluks

Guhagar 25 KM near
Ratnagiri 32 KM near
Sangmeshwar 42 KM
Chipalun 43 KM near

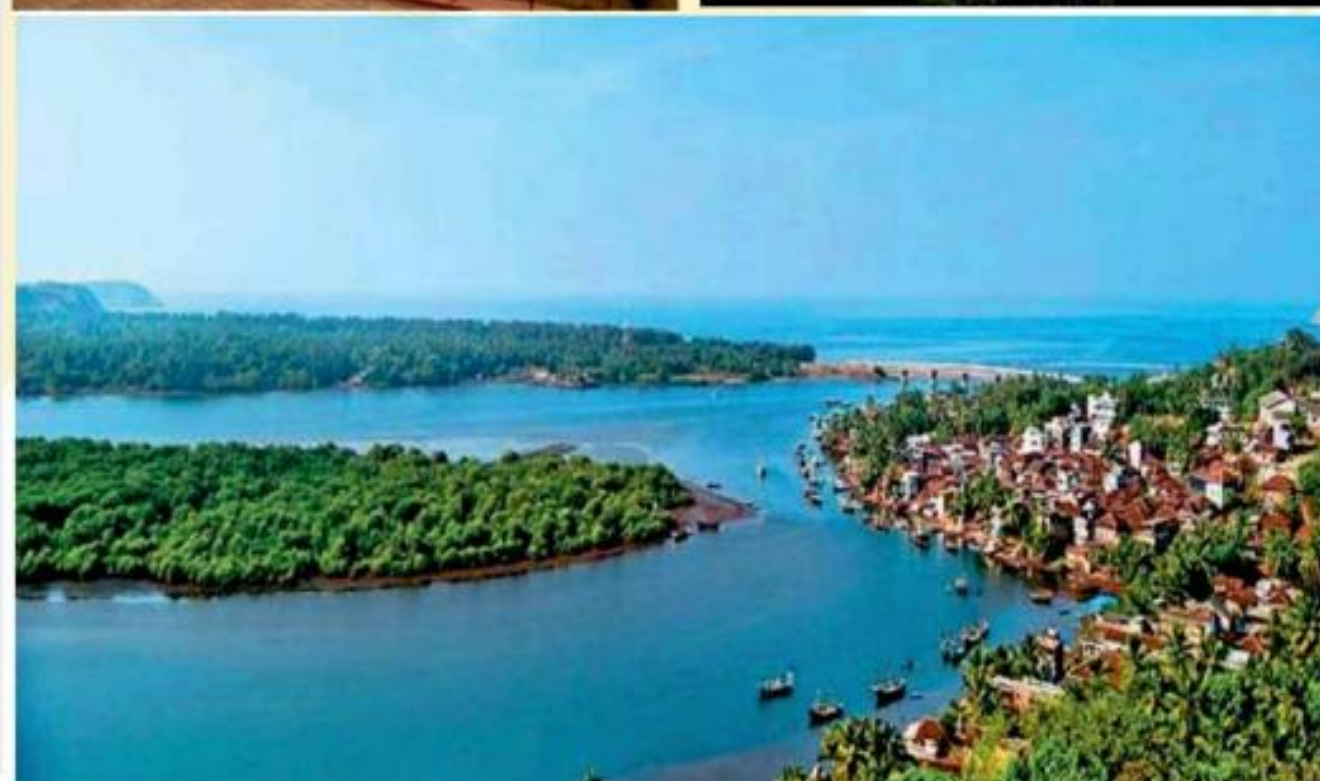
Near By Air Ports

Kolhapur Airport 148 KM
Lohegaon Airport 185 KM
CST Airport 235 KM

Near By Tourist Places

Sambre Airport 238 KM
Velneswar 17 KM near
Guhagar 30 KM near
Ratnagiri 31 KM near
Anjanvel 44 KM near
Murud-Karde 65 KM

SITE IMAGES



ABOUT UNDI

There is a small village in Ratnagiri District of Maharashtra State named Undi. The small village is situated towards south. There is pure white water on the beach and is completely tidy. Though tourism on this beach, the place is clean and tidy. If you are travelling by railway, nearest railway station is Chiplun Rail Way Station at a distance of 10 km. by road also Chiplun is the nearest town for tourists look out for accomodation.



Kokan Coastal Project



UNDI RATNAGIRI

By Rail

Ratnagiri RailWay Station (near to Ratnagiri) are the Rail way stations reachable from near by towns.

By Road

Ratnagiri are the nearby by towns to Undi having road connectivity to Undi Narvan having road connectivity to Narvan

NEAREST PLACES

Near Cities

Near Cities
Ratnagiri 31 KM near
Chiplun 49 KM near
Mahabaleswar 98 KM
Karad 105 KM near

Near By Talukas

Guhagar 25 KM
Ratnagiri 32 KM
Sangmeshwar 42 KM
Chiplun 70 KM

Near By Air Ports

Kolhapur Airport 168 Km
Lohegaon Airport 285 Km
CST Airport 235 Km
Sambre Airport 238 KM
Lohegaon Airport 185 KM
CST Airport 305 KM near
Sambre Airport 238 KM
near 174 KM

Near By Tourist Places

Velneshwar 17 KM near
Guhagar 35 KM near
Ratnagiri 31 KM near
Anjanvel 54 KM near
Murud-Karde 65 KM near

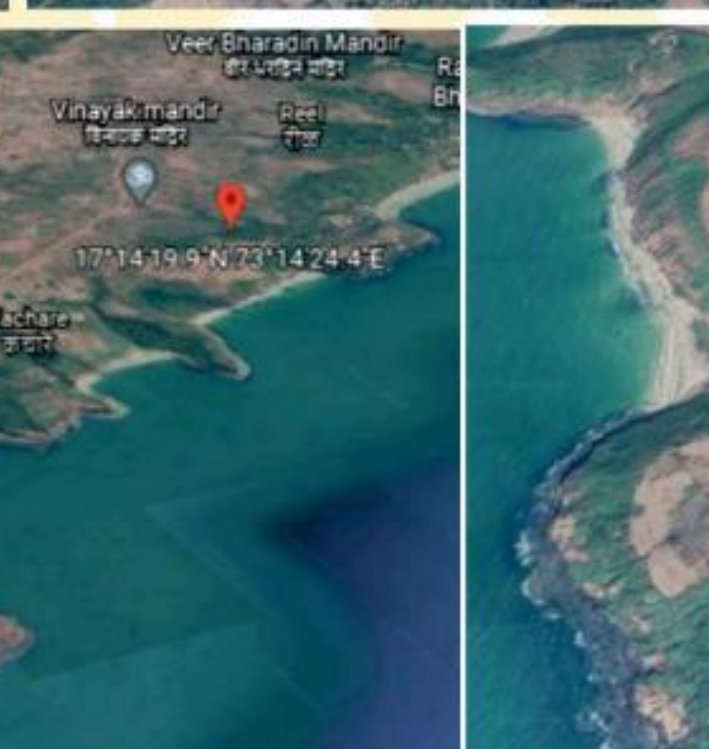
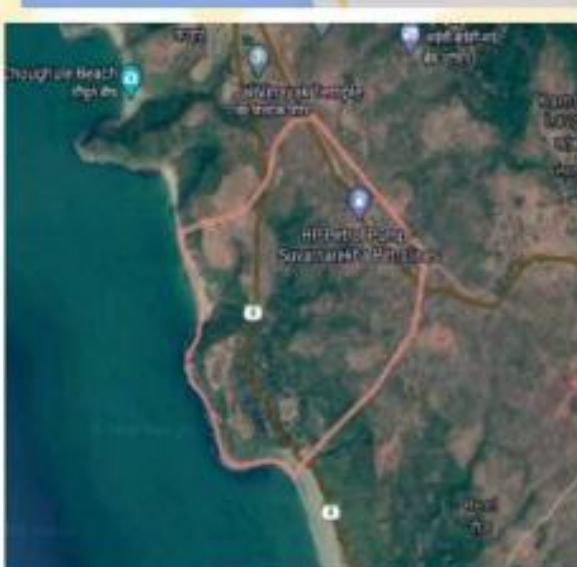
Near By Districts

Ratnagiri 31 KM near
Satara 200 KM near
Kolhapur 145 KM near
Sindhudurg 149 KM near

Near By RailWay Station

Ratnagiri Rail Way Station
34.1 KM near
Chiplun Rail Way Station
50 KM near

LOCATION MAP



17°14'19.9"N 73°14'24.4"E



Kokan Coastal Project



TAVASAL

GUHAGAR, (AREA 500 + ACRE)

Locality Name : Tavasal

Taluka Name : Guhagar

District : Ratnagiri

State : Maharashtra

Region : Konkan

Elevation / Altitude: 24 meters. Above Seal level

Telephone Code / Std Code: 02359

Tavasal is a small Village/hamlet in Guhagar Taluka in Ratnagiri District of Maharashtra State, India. It comes under Tavsai Panchayath. It belongs to Konkan region . It belongs to Konkan Division . It is located 40 KM towards North from District head quarters Ratnagiri. 19 KM from Guhagar. 228 KM from State capital Mumbai Hedavi (8 KM) , Watad (10 KM) , Sakhari Agar (10 KM) , Velneshwar (10 KM) , Abloli (11 KM) are the nearby Villages to Tavasal. Tavasal is surrounded by Chipalun Taluka towards East , Ratnagiri Taluka towards South , Sangmeshwar Taluka towards East , Khed Taluka towards North Ratnagiri , Chiplun , Mahabaleswar , Mahad are the near by Cities to Tavasal.

SITE IMAGES



ABOUT TAWSAL

There is a small beach on the coastal part of Tavsai village called Tavsai beach. The beach is extremely quiet and is a virgin one. There is no water sports on tavsai beach and is preferred for spending some quality time with family and friends.

There is pure white water on the beach and is completely tidy. Since there is no much tourism on this beach, the place is clean and tidy. There is a ferry from tavsai beach that goes towards Ganpatipule which is another beautiful place. The nearby places to the beach are Ratnagiri, Chiplun, Mahabaleswar, Mahad. The ferry boat safari is available to cross the water body to cancel long distance driving with your vehicle. So the way visit to this place is a pleasure and a new experience of traveling.





TAVASAL
GUHAGAR, RATNAGIRI

HOW TO REACH TAVASAL

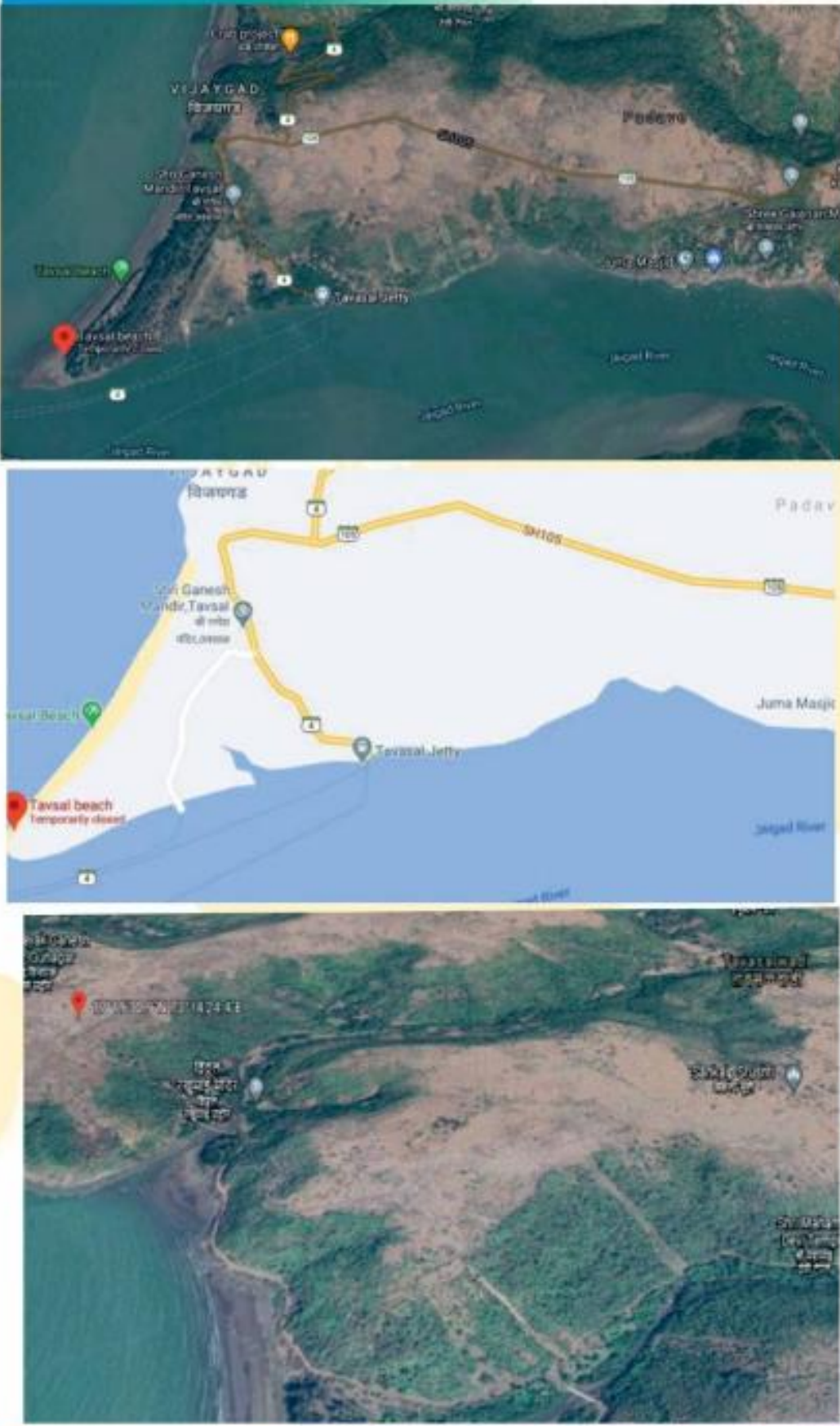
By Rail
There is no railway station near to Narvan in less than 10 km. Chiplun Rail Way Station (near to Chiplun) , Kamathe Rail Way Station (near to Chiplun) , Ratnagiri Rail Way Station (near to Ratnagiri) are the Rail way stations reachable from near by towns.

By Road
Chiplun , Ratnagiri are the nearby by towns to

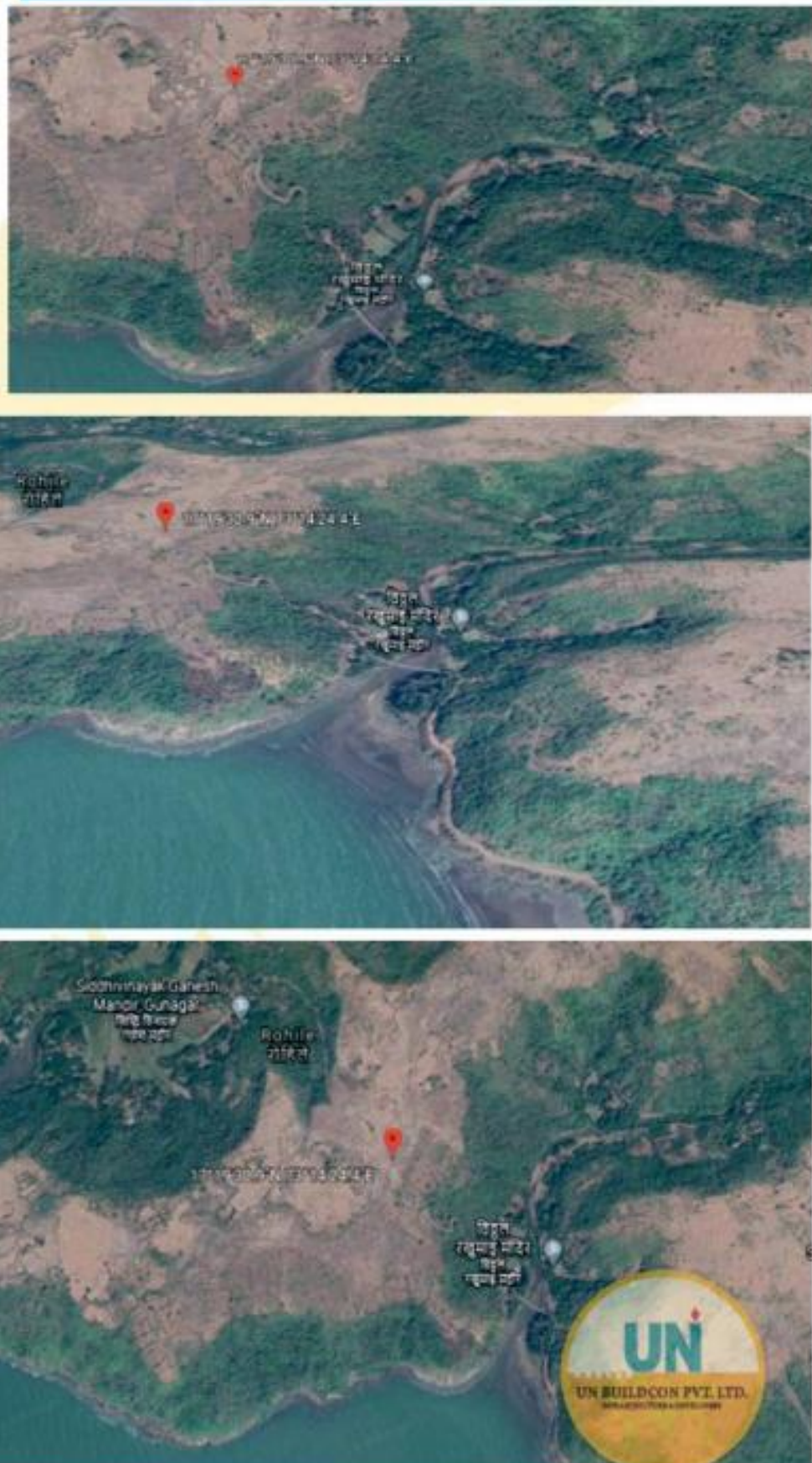
NEAREST PLACES

<u>Near Cities</u>	<u>Near By Tourist Places</u>
Chiplun 40 KM	Velneswar 6 KM near
Ratnagiri 43 KM	Guhagar 25 KM near
Mahabaleswar 150 KM	Anjanvel 45 KM near
Mahad 130 KM	Ratnagiri 44 KM near
<u>Near By Talukas</u>	<u>Near By Districts</u>
Guhagar 25 KM	Ratnagiri 43 KM near
Chiplun 35 KM	Satara 150 KM near
Ratnagiri 43 KM	Kolhapur 180 KM near
Sangmeshwar 60 KM	Sindhudurg 161 KM near
<u>Near By Air Ports</u>	<u>Near By RailWay Station</u>
Kolhapur Airport 190KM	Savarda Station 33 KM
Lohegaon Airport 174 KM	Aravali Road Station 34 KM
CST Airport 222 KM	
Sambre Airport 247 KM	

LOCATION MAP



SATELLITE IMAGES



17°19'30.9"N 73°14'24.4"E



INSPIRED RELIABILITY

Kokan Coastal Project

NARVAN

(Area 1000 Acre +)

Locality Name : Narvan
Taluka Name : Guhagar
District : Ratnagiri
State : Maharashtra
Region : Konkan
Elevation / Altitude: 24 meters. Above Seal level
Telephone Code / Std Code: 02359

Narvan is a Village in Guhagar Taluka in Ratnagiri District of Maharashtra State, India. It belongs to Konkan region . It belongs to Konkan Division . It is located 85 KM towards North from District head quarters Ratnagiri. 14 KM from Guhagar. 185 KM from State capital Mumbai
Narvan Pin code is 415728 and postal head office is Hedavi .
Sakhari Agar (5 KM) , Velneshwar (6 KM) , Pimpar (8 KM) , Kudali (9 KM) , Abloli (11 KM) are the nearby Villages to Narvan.
Narvan is surrounded by Chipalun Taluka towards East , Ratnagiri Taluka towards South , Sangmeshwar Taluka towards East , Khed Taluka towards North .
Chiplun , Ratnagiri , Mahabaleswar , Mahad are the near by Cities to Narvan.

SITE IMAGES



ABOUT NARVAN

Narvan is a Village in Guhagar Taluka in Ratnagiri District of Maharashtra State, India
It belongs to Konkan region
It belongs to Konkan Division
It is located 45 KM towards North from District head quarters Ratnagiri
19 KM from Guhagar
223 KM from State capital Mumbai
Narvan Pin code is 415728 and postal head office is Hedavi
Tavasal (5 KM) , Sakhari Agar (5 KM) , Velneshwar (6 KM) , Pachari Agar (7 KM) , Pimpar (9 KM) are the nearby Villages to Narvan
Narvan is surrounded by Chipalun Taluka towards East , Sangmeshwar Taluka towards East , Ratnagiri Taluka towards South , Khed Taluka towards North
Chiplun , Ratnagiri , Mahabaleswar , Mahad are the near by Cities to Narvan

It is near to arabian sea





NARVAN
GUHAGAR, RATNAGIRI

HOW TO REACH NARVAN

By Rail
There is no railway station near to Narvan in less than 10 km. Chiplun Rail Way Station (near to Chiplun), Kamathe Rail Way Station (near to Chiplun), Ratnagiri Rail Way Station (near to Ratnagiri) are the Rail way stations reachable from near by towns.

By Road
Chiplun , Ratnagiri are the nearby by towns to

NEAREST PLACES

Near Cities	Near By Tourist Places
Chiplun 50 KM	Velneswar 6 KM near
Ratnagiri 30 KM	Guhagar 20 KM near
Mahabaleswar 65 KM	Anjanvel 32 KM near
Mahad 103 KM	Ratnagiri 34 KM near
Near By Talukas	Murud-Karde 53 KM near
Guhagar 13 KM	Near By Districts
Chiplun 35 KM	Ratnagiri 30 KM near
Ratnagiri 43 KM	Satara 100 KM near
Sangmeshwar 47 KM	Kolhapur 143 KM near
Near By Air Ports	Sindhudurg 161 KM near
Kolhapur Airport 154 KM	Near By RailWay Station
Lohegaon Airport 174 KM	Savarda Station 33 KM
CST Airport 307 KM	Aravali Road Station 34 KM
Sambre Airport 247 KM	

LOCATION MAP



SATELLITE IMAGES



17°19'30.9"N 73°14'24.4"E



INSPIRED RELIABILITY

Kokan Coastal Project

DABHOL (Area 1000 + Acres)

Locality Name : Dabhol (दाभोल)

Taluka Name : Dapoli

District : Ratnagiri

State : Maharashtra

Region : Konkan

Elevation / Altitude: 27 meters. Above Seal level

Telephone Code / Std Code: 02358

Dabhol is a Village in Dapoli Taluka in Ratnagiri District of Maharashtra State, India. It belongs to Konkan region . It belongs to Konkan Division . It is located 78 KM towards North from District head quarters Ratnagiri. 25 KM from Dapoli. 190 KM from State capital Mumbai Dabhol Pin code is 415706 and postal head office is Dabhol Vedur (1 KM) , Navanagar (2 KM) , Navse (3 KM) , Vanoshi T. Panchanadi (3 KM) , Anjanvel (4 KM) are the nearby Villages to Dabhol. Dabhol is surrounded by Dapoli Taluka towards North , Khed Taluka towards East , Chipalun Taluka towards East , Mandangad Taluka towards North .Chiplun , Mahad , Mahabaleswar , Ratnagiri are the near by Cities to Dabhol.

SITE IMAGES



ABOUT DABHOL

Dabhol is located near Dapoli in Ratnagiri district of Maharashtra. ... Dabhol beach is one of the most visited beaches in konkan. The beach has black sand. The beach has a great importance. Vashishti river merges the Arabian sea at Dabhol. Dabhol town is located on the south-west border of Dapoli in Ratnagiri district of Maharashtra in Konkan. Vashishthi River flowing from Chiplun merges into the sea at Dabhol and is called as Dabhol creek. Major attractions of Dabhol are Chandikadevi Mandir (temple of Goddess Chandika) and a fishing jetty has made it increasingly popular as a tourist destination in Konkan.



INSPIRED RELIABILITY



DABHOL
DAPOLI, RATNAGIRI

HOW TO REACH Dabhol

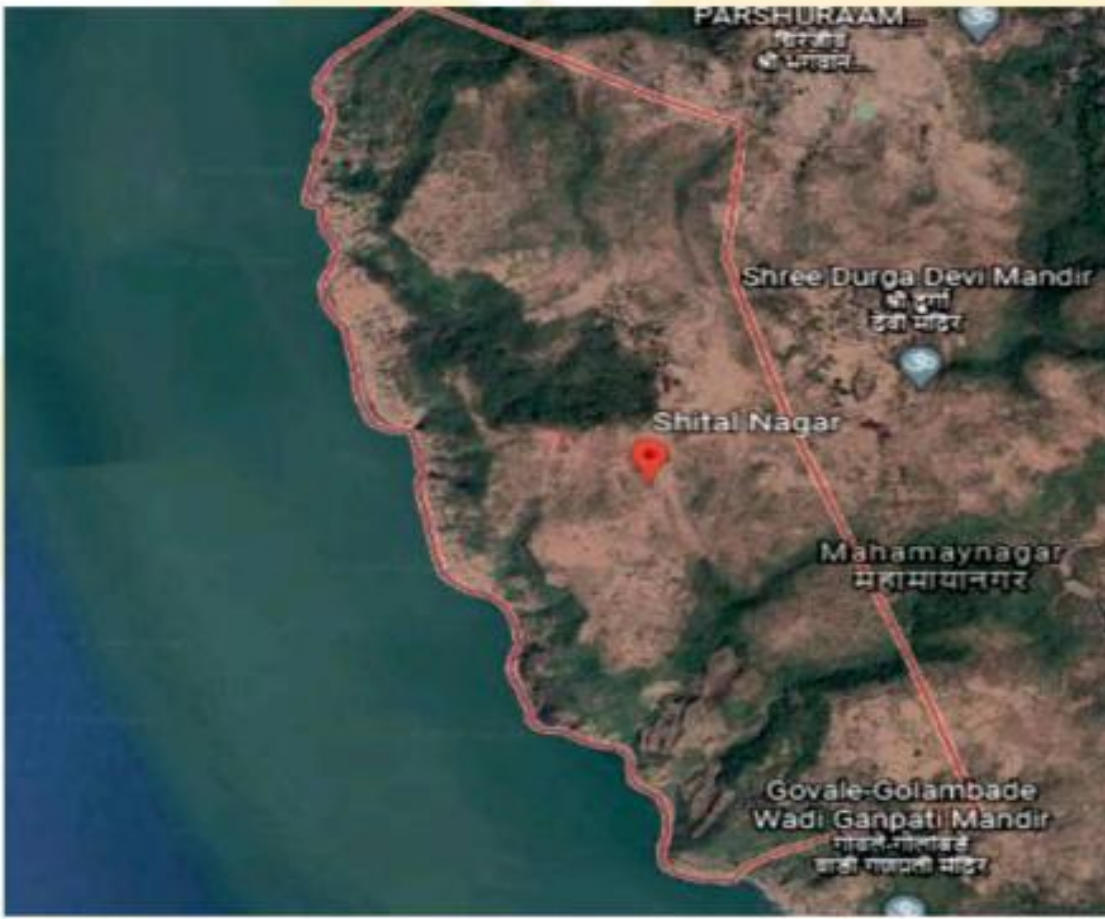
By Rail
There is no railway station near to Dabhol in less than 10 km. Khed Rail Way Station (near Khed) are the Rail way stations reachable from near by towns.

By Road
Khed are the nearby by towns to Dabhol having road connectivity to Dabhol

NEAREST PLACES

<u>Near Cities</u>	<u>Near By Tourist Places</u>
Chiplun 52 KM near	Anjanvel 5 KM near
Mahad 76 KM near	Guhagar 13 KM near
Mahabaleswar 100 KM	Murud-Karde 21 KM
Ratnagiri 91 KM near	Harnai 23 KM near
<u>Near By Taluks</u>	Velneshwar 26 KM
Guhagar 21 KM near	<u>Near By Districts</u>
Dapoli 23 KM near	Ratnagiri 91 KM
Khed 33 KM near	Satara 99 KM
Chipalun 42 KM near	Raigad 137 KM
<u>Near By Air Ports</u>	Pune 142 KM
Lohegaon Airport 152 KM	<u>Near By RailWay Station</u>
Kolhapur Airport 179 KM	Khed Station 32 KM
CST Airport 260 KM	Chiplun Station 42 KM
Sambre Airport 276 KM	

LOCATION MAP



SATELLITE IMAGES



17°35'04"N 73°10'13"E



Kokan Coastal Project



SHEETALNAGAR (Area 200 + Acres)

Gram Panchayat :Burondi

Block / Tehsil : Dapoli

District : Ratnagiri

State : Maharashtra

Pincode : 415720

Area : 407 hectares

Nearest Town : Dapoli Camp (16 km)

According to Census 2011 information the location code or village code of Shital Nagar village is 564895. Shital Nagar village is located in Dapoli Tehsil of Ratnagiri district in Maharashtra, India. It is situated 16km away from sub-district headquarter Dapoli Camp and 144km away from district headquarter Ratnagiri. As per 2009 stats, Burondi is the gram panchayat of Shital Nagar

The total geographical area of village is 407 hectares. Shital Nagar has a total population of 354 peoples. There are about 118 houses in Shital Nagar village. As per 2019 stats, Shital Nagar villages comes under Dapoli assembly & Raigad parliamentary constituency. Dapoli Camp is nearest town to Shital Nagar which is approximately 16km away.

SITE IMAGES



ABOUT SHEETALNAGAR

Sheetalnagar in Dapoli is a beautiful town located along the Konkan coast. It has one of the longest stretches of beaches in the country. The beaches of Dapoli are famous for their stunning beauty, amazing sea food and exciting water sports. Dapoli is a beach lover's paradise. one of the most popular beaches of Dapoli Sheetal Nagar beach . They are situated far away from the usual maddening tourist crowds. Perfect for adventure enthusiasts, they offer a variety of water sports options. One can go for boat rides, scuba diving, surfing, parasailing, and dolphin watching. The sea food too is delicious and a must-try for tourists.



SHEETALNAGAR

DAPOLI, RATNAGIRI

NEARBY VILLAGES

- Tamastirth
- Teleshwarnagar
- Nigade
- Karajgaon
- Mahamaynagar
- Kinhali
- Devke
- Chandikanagar
- Olgaon
- Burondi
- Walane

NEAREST PLACES

Near Cities

- Mahad 71 KM near
- Chiplun 70 KM near
- Mahabaleswar 98 KM near
- Nandgaon 82 KM near

Near By Taluks

- Dapoli 9 KM near
- Mandangad 29 KM near
- Khed 36 KM near
- Guhagar 41 KM near

Near By Air Ports

- Lohegaon Airport 200 KM
- CST Airport 250 KM near
- Kolhapur Airport 240 KM
- Debolim Airport 350 KM near

Near By Tourist Places

- Murud-Karde 10 KM near
- Harnai 9 KM near
- Anjanvel 22 KM near
- Harihareshwar 32 KM near
- Guhagar 34 KM near

Near By Districts

- Ratnagiri 110 KM near
- Satara 170 KM near
- Raigad 110 KM near
- Pune 129 KM near

Near By RailWay Station

- Khed Station 40 KM near
- Veer Station 51 KM near

LOCATION MAP



SATELLITE IMAGES



17°40'34"N 73°07'3e3"E



Kokan Coastal Project



KARDE (Area 200 + Acres)

Locality Name : Karde
Taluka Name : Dapoli
District : Ratnagiri
State : Maharashtra
Region : Konkan

Elevation / Altitude : 27 meters. Above Seal level
• Karde is a Village in Dapoli Taluka in Ratnagiri District of Maharashtra State, India. It belongs to Konkan region . It belongs to Konkan Division . It is located 101 KM towards North from District head quarters Ratnagiri. 10 KM from Dapoli. 168 KM from State capital Mumbai. Karde Pin code is 415713 and postal head office is Harnai .

• PMurud (3 KM) , Ladghar (4 KM) , Asud (4 KM) , Asud (5 KM) , Gavhe (6 KM) are the nearby Villages to Karde. Karde is surrounded by Mandangad Taluka towards North , Khed Taluka towards East , Guhagar Taluka towards South , Shrivardhan Taluka towards North .Mahad , Chiplun , Mahabaleswar , Nandgaon are the near by Cities to Karde.

• It is near to arabian sea. There is a chance of humidity in the weather.

SITE IMAGES



ABOUT KARDE

The beach stretches to the whole four kilometers and is just 12 kilometers away from Dapoli. Karde beach is considered as one of the safest and popular beaches in Konkan. Karde offers everything from the soft sand fiddling with your feet like silk, capturing various rare, migrant birds with a click of your camera and enjoying dolphin rides in the deep sea for everyone.

The various experiences one can have at this beach make it worthy of a longer stay, perhaps a full holiday! Every tourist and traveller finds fulfilment in the calm, relaxing and pollution free Karde beach.



Kokan Coastal Project



KARDE

TALUKA: DAPOLI, RATNAGIRI

Near Cities

Mahad 51 KM near
Chiplun 53 KM near
Mahabaleswar 65 KM near
Nandgaon 82 KM near

Near By Talukas

Dapoli 11 KM near
Mandangad 29 KM near
Khed 43 KM near
Guhagar 50 KM near

Near By Air Ports

Lohegaon Airport 220 KM
CST Airport 250 KM near
Kolhapur Airport 230 KM
Debolim Airport 350 Km

Near By Tourist Places

Murud-Karde 0 KM near
Harnai 3 KM near
Anjanvel 20 KM near
Harihareshwar 32 KM
Guhagar 50 KM near

Near By Districts

Ratnagiri 90 KM near
Satara 103 KM near
Raigad 116 KM near
Pune 129 KM near

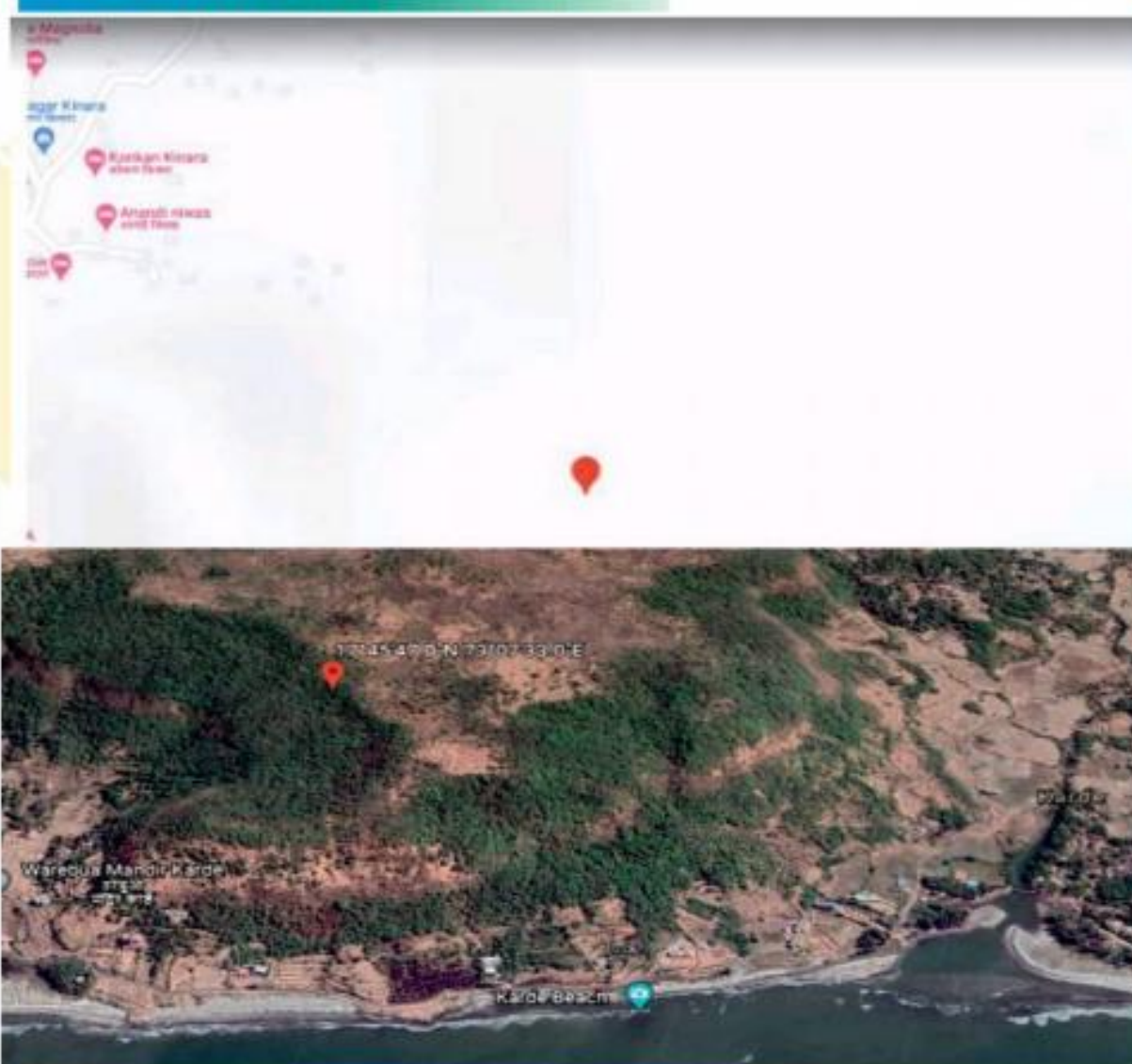
Near By RailWay Station

Khed Station 33 KM near

Point to Remember:

Karde beach is a less explored beach of the Konkan region. It offers lots of activities on the beach for tourists. Located around 12 km away from Dapoli city it provides a calm and clean beach with soothing evenings. Khed is the nearest railway station to reach karde beach. khed railway station is major station on konkan railway route and all trains plying from this route stops at khed. from khed tourists can hire a cab or reach karde beach by state transport buses.

LOCATION MAP



SATELLITE IMAGES



17°45'47"N 73°07'33"E



INSPIRED RELIABILITY

Kokan Coastal Project

ANJARLE (Area 500 + Acres)

TAL: DAPOLI, RATNAGIRI

Locality Name : Anjarle

Taluka Name : Dapoli

District : Ratnagiri

State : Maharashtra

Region : Konkan

Elevation / Altitude: 27 meters. Above Seal level

Telephone Code / Std Code: 02358

Anjarle is a Village in Dapoli Taluka in Ratnagiri District of Maharashtra State, India. It belongs to Konkan region . It belongs to Konkan Division . It is located 115 KM towards North from District head quarters Ratnagiri. 17 KM from Dapoli. 153 KM from State capital Mumbai

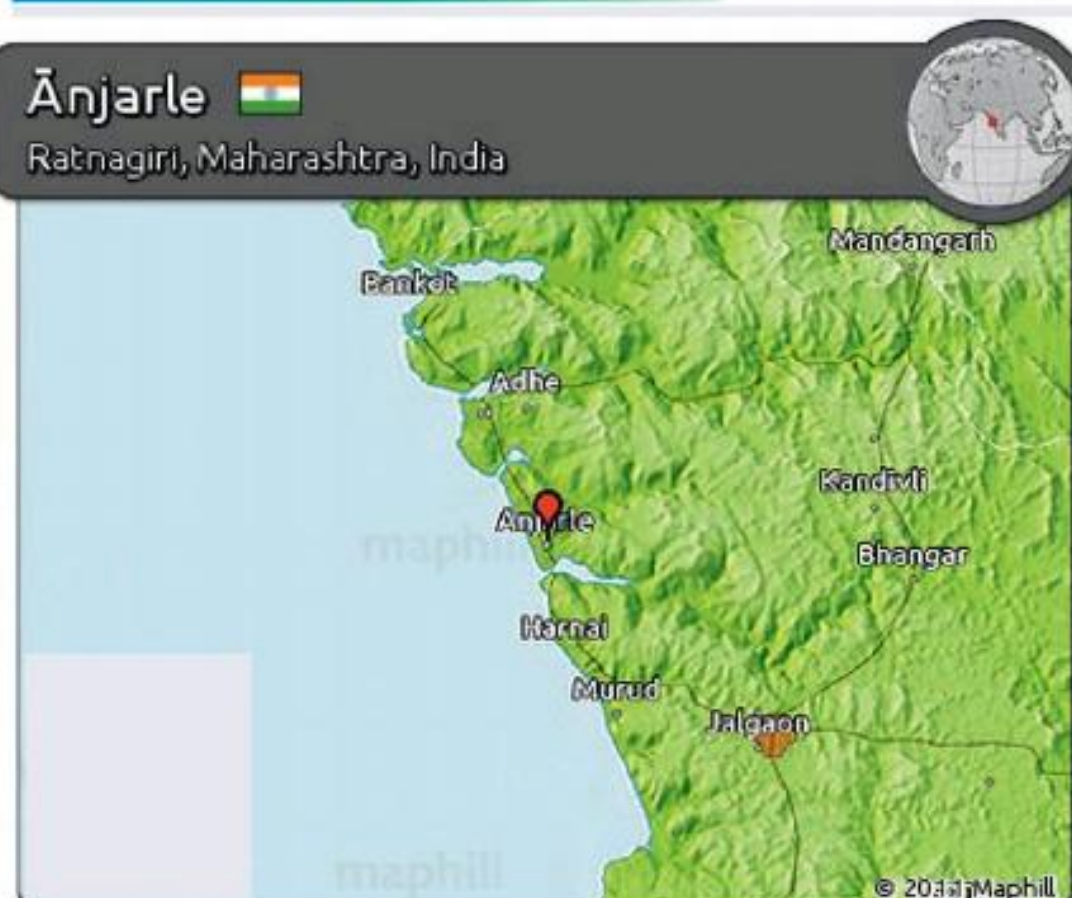
Anjarle Pin code is 415714 and postal head office is Anjarla .

Paj Pandhari (2 KM) , Sukondi (3 KM) , Padale (4 KM) , Ilane (4 KM) , Ade (4 KM) are the nearby Villages to Anjarle. Anjarle is surrounded by Mandangad Taluka towards East , Shrivardhan Taluka towards North , Mhasala Taluka towards North , Khed Taluka towards East .

Mahad , Chiplun , Mahabaleswar , Nandgaon are the near by Cities to Anjarle.

It is near to arabian sea. There is a chance of humidity in the weather.

SITE MAP



ABOUT ANJARLE

Anjarle is a tiny village in the Dapoli Taluka of Ratnagiri district in the Maharashtra state of India and is one of the finest places in Konkan. It is a small port located near the mouth of Jog river. It is just 25 km from Dapoli and is famous for the 'Kadyawarcha Ganpati' (Ganesh temple situated on a cliff). Anjarle has untouched and unspoiled beach surrounded by palms and trees. Tourism facilities are very limited.

This Palm Beach is an ideal place to visit on a long weekend. There are other untouched beaches on the region and are equally beautiful. Anjarle is a nice little, green village having basic facilities. However, as there are very few resort or hotels at Anjarle, but every one can find home stays for accommodation and food. Local people are friendly, humble and helpful. Villagers also provide rented accommodation in their homes and serve delicious home-made food. The nearby places to visit from Anjarle are Kelshi Beach just 8 KM away, Murud around 20 KM away, and Dapoli around 25 KM away.

Kokan Coastal Project

ANJARLE

TAL: DAPOLI, RATNAGIRI

Point to Remember:

1. The proposed site visit at given location having full Arabian sea elevation view,
2. View from the top location with good road access from property to top hill around 1 Km height from the sea level
3. Full of green pasture landscape and abundance deposit of laterite soil.
4. There is no occupancy of locals or farming field at location.
5. Encroachment like negative social factors.

NEAREST PLACES

Near Cities

Mahad 70 KM near
Chiplun 80 KM near
Mahabaleswar 106 KM
Nandgaon 170 KM near

Near By Taluks

Dapoli 22 KM near
Mandangad 37 KM near
Shrivardhan 54 KM near
Mhasala 65 KM near

Near By Air Ports

Lohegaon Airport 205 Km
CST Airport 230 Km
Kolhapur Airport 250 Km

Near By Tourist Places

Harnai 9 KM near
Murud-Karde 18 KM
Harihareshwar 41 Km

Shrivardhan 50 Km

Anjanvel 60 Km

Near By Districts

Raigad 190 Km
Satara 192 Km
Ratnagiri 110 Km
Pune 195 Km

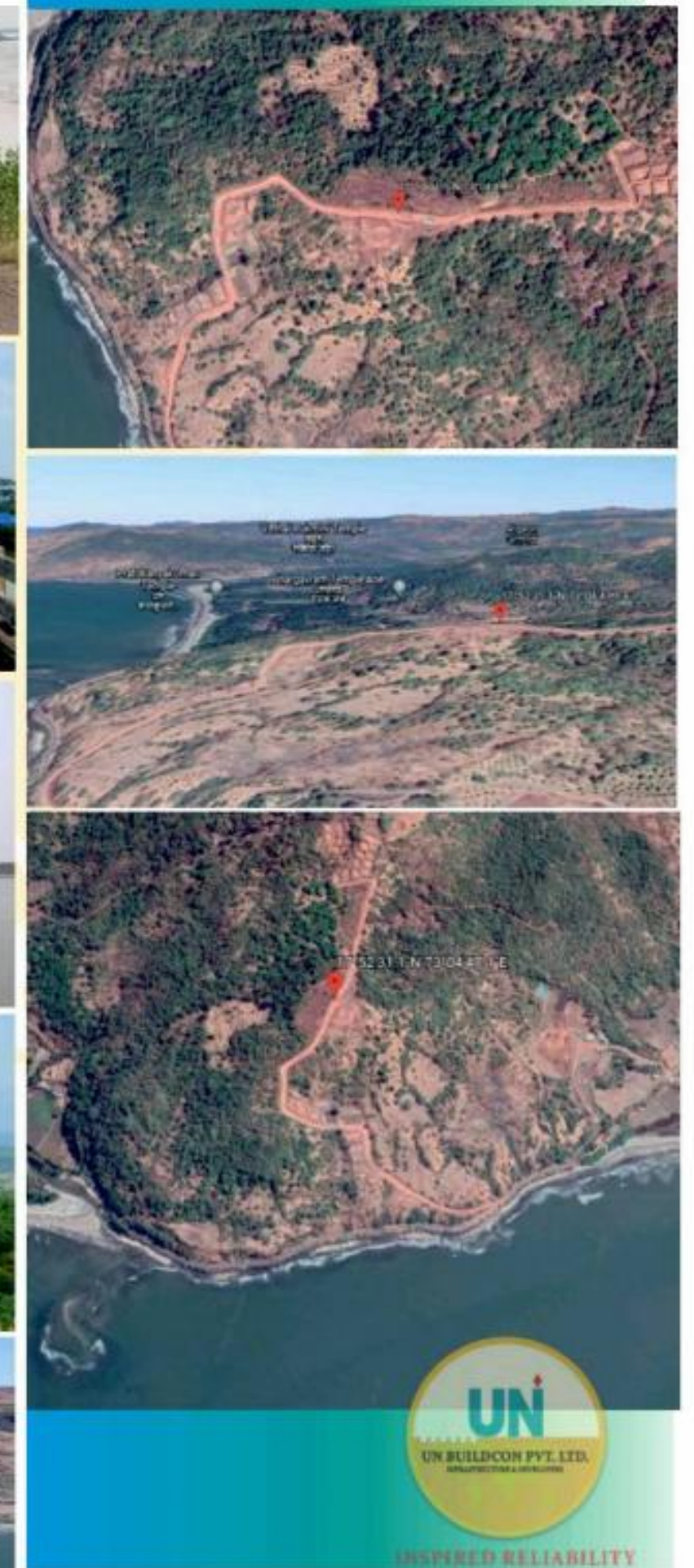
Near By RailWay Station

Khed Station 41 Km
Veer Station 45 Km

SITE IMAGES



SATELLITE IMAGES



Kokan Coastal Project



AARE WARE

RATNAGIRI (AREA 200 ACRE+)

Locality Name : AareWare

Taluka Name : Ratnagiri

District : Ratnagiri

State : Maharashtra

Region : Konkan

Elevation / Altitude: 129 meters. Above Seal level

Telephone Code / Std Code: 02352

Aare Ware - Kotavade is a Village in Ratnagiri Taluka in Ratnagiri District of Maharashtra State, India. It belongs to Konkan region . It belongs to Konkan Division . It is located 15 KM towards North from District head quarters Ratnagiri. 13 KM from Ratnagiri. 340 KM from capital Mumbai

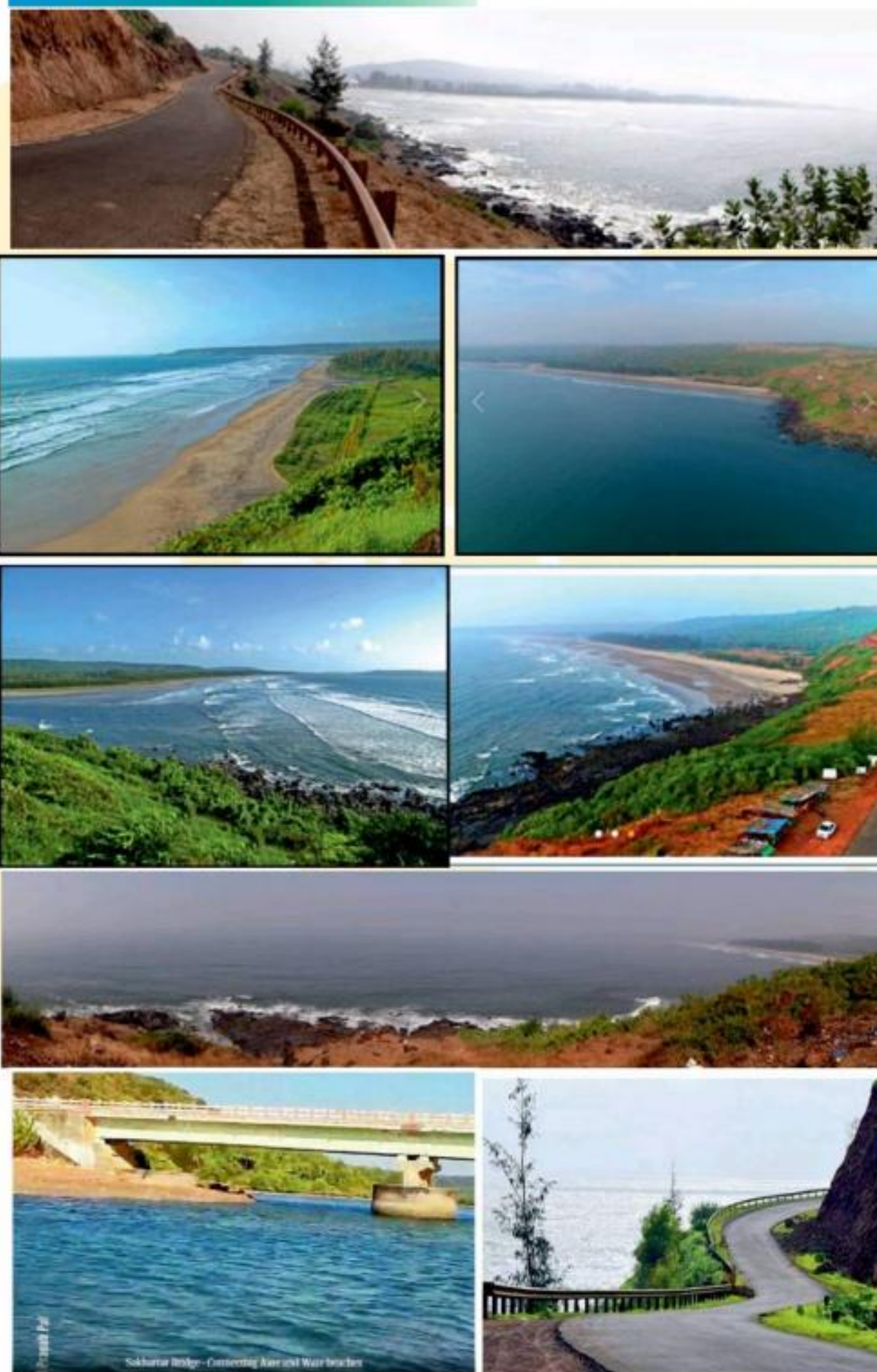
Kotavade Pin code is 415617 and postal head office is Kotawada .

Dhamanase (3 KM) , Pirandavane (3 KM) , Vetoshi (4 KM) , Basani (5 KM) , Dandeadom (6 KM) are the nearby Villages to Kotavade. Kotavade is surrounded by Sangmeshwar Taluka towards East , Lanja Taluka towards South , Guhagar Taluka towards North , Chipalun Taluka towards North .

Ratnagiri , Chiplun , Devgarh , Karad are the near by Cities to Kotavade.

It is near to arabian sea. There is a chance of humidity in the weather.

SITE IMAGES



ABOUT AARE WARE

Aare-Ware is a safe and blue water beach in Ratnagiri. It is located near Ganapatipule. The road travels past a high cliff, below which the sea waves ferociously lap without pause. It is blessed with a heavenly seashore with a clear view for miles across the blue waters was not known to many. But thanks to the new, shorter road being built to connect Ratnagiri and Ganpatipule, Aare-Ware has found a place for itself on the tourism map of Konkan. At Aare-Ware, the road travels past a 100 feet high cliff, below which sea waves lap ferociously without pause. In fact, the road hugs the seashore for a length of some 7 - 8 Km. As of now, there are no amenities available and tourists are greeted only by diving sea gulls and barren cliffs.



Kokan Coastal Project

AARE WARE RATNAGIRI

HOW TO REACH AARE WARE

By Rail

There is no railway station near to Aare Ware in less than 10 km. Chiplun Rail Way Station (near to Chiplun), Kamathe Rail Way Station (near to Chiplun), Ratnagiri Rail Way Station (near to Ratnagiri) are the Rail way stations reachable from near by towns.

By Road

Chiplun, Ratnagiri are the nearby by towns to Narvan having road connectivity to Narvan

NEAREST PLACES

Near Cities

Chiplun 85 KM
Ratnagiri 15 KM
Mahabaleswar 200 KM
Mahad 170 KM

Near By Talukas

Guhagar 13 KM
Chiplun 85 KM
Ratnagiri 15 KM
Sangmeshwar 47 KM

Near By Air Ports

Kolhapur Airport 154 KM
Lohegaon Airport 174 KM
CST Airport 375 KM
Sambre Airport 250 KM

Near By Tourist Places

Velneshwar 6 KM near
Guhagar 56 KM near
Anjanvel 32 KM near
Ratnagiri 15 KM near
Murud-Karde 53 KM near

Near By Districts

Ratnagiri 15 KM near
Satara 100 KM near
Kolhapur 143 KM near
Sindhudurg 161 KM near

Near By RailWay Station

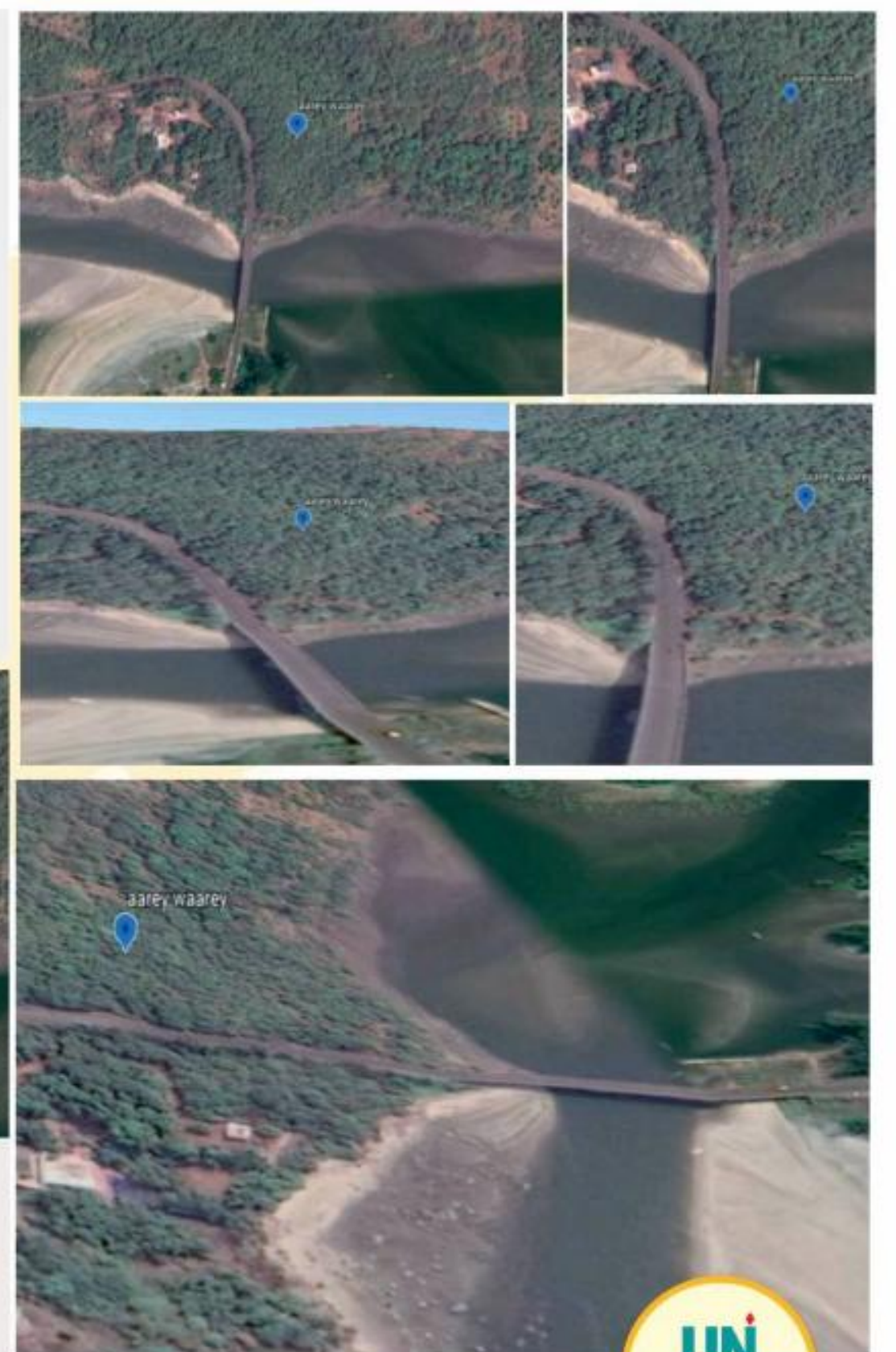
Savarda Station 33 KM
Aravali Road Station 34 KM

LOCATION MAP

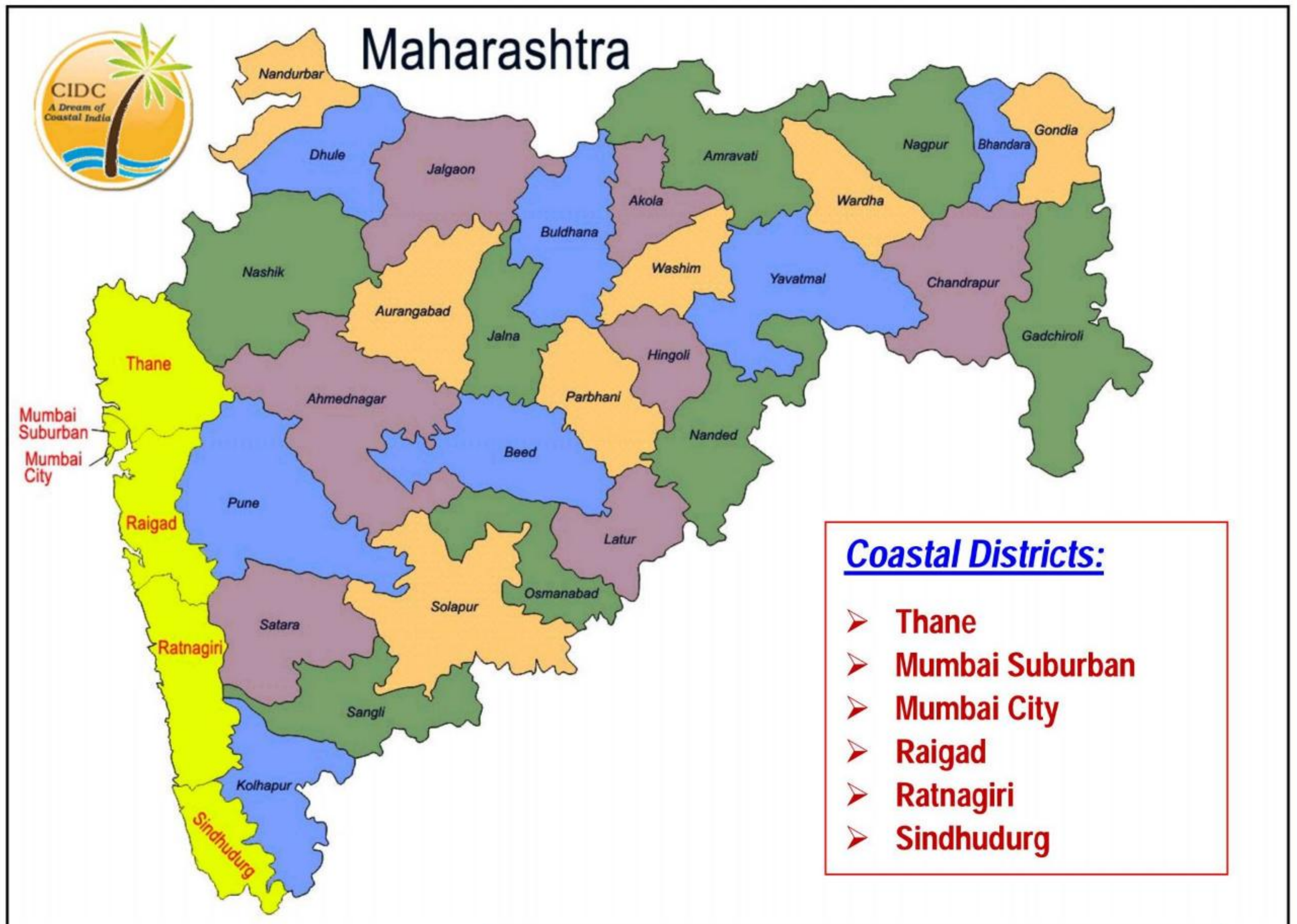


17°04'45"N 73°17'28"E

SATELLITE IMAGES



COASTAL MAHARASHTRA DEVELOPMENT COUNCIL (CMDc)



Total Coastline of Greater Mumbai District: 114 Km

Thane: (Coast: 113 Kms)

Area	9,558 Km ²
Population	11,060,148
Density	1157 / Km ²
Literacy	80.67 %
No. of Villages	1748

Raigad: (Coast: 122 Km)

Area	7,149 Km ²
Population	2,635,394
Density	370 / Km ²
Literacy	83.89 %
No. of Villages	1970

Mumbai Suburban:

Area	446 Km ²
Population	9,332,481
Density	20,925/Km ²
Literacy	89.91 %
No. of Villages	87

Ratnagiri: (Coast: 237 Km)

Area	8,208 Km ²
Population	1,615,069
Density	197 / Km ²
Literacy	82.18 %
No. of Villages	1543

Mumbai City:

Area	157 Km ²
Population	3,085,411
Density	19,652/Km ²
Literacy	89.21 %

Sindhudurg: (Coast: 120 Km)

Area	5,207 Km ²
Population	849,651
Density	163 / Km ²
Literacy	85.56 %
No. of Villages	743

Key issues to be addressed through seminars:

- Developmental Plan Research Survey
- Local Logistics Analysis
- Integration Plan of Beaches Development
- Environmental Aspects
- Fishermen Basic Skill Development Program
- Local Beach Tourism Promotion Plan & Development
- Creation of Awareness about Beach Tourism
- Creation of Basic Infrastructure of Beaches
- Providing sanitations to schools, hospitals and communities



Narvan Village 17°19'30.9"N 73°14'24.4"E



Wada Tiware 16°41'19.1"N 73°19'57.1"E



Aare Ware Village 17°04'45"N 73°17'28"E



Mervi Village 16°50'13"N 73°18'11"E



Tavsai Village 17°18'52.1"N 73°14'30.3"E



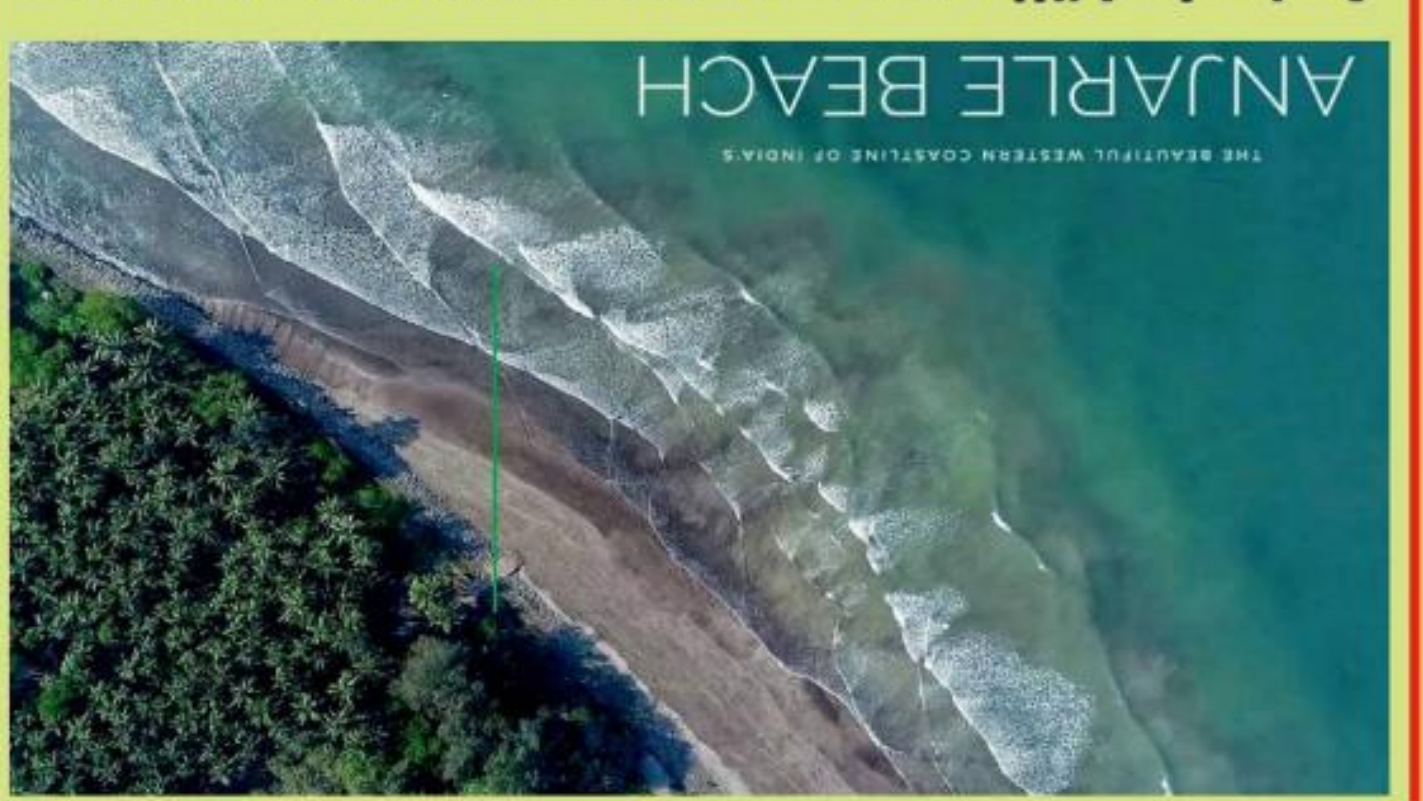
Undi Village 17°14'19.9"N 73°14'24.4"E



Dabhol Village 17°35'04"N 73°10'13"E



Narvan Village 17°19'30.9"N 73°14'24.4"E



Anjarle Village 17°52'31.1"N 73°04'47.1"E



Karde Village 17°45'47"N 73°07'33"E



Narvan Village 17°19'30.9"N 73°14'24.4"E



Wada Tiware 16°41'19.1"N 73°19'57.1"E



Are Ware Village 17°04'43"N 73°17'25"E



Mervi Village 16°50'13"N 73°18'11"E



Tavsai Village 17°18'52.1"N 73°14'30.3"E



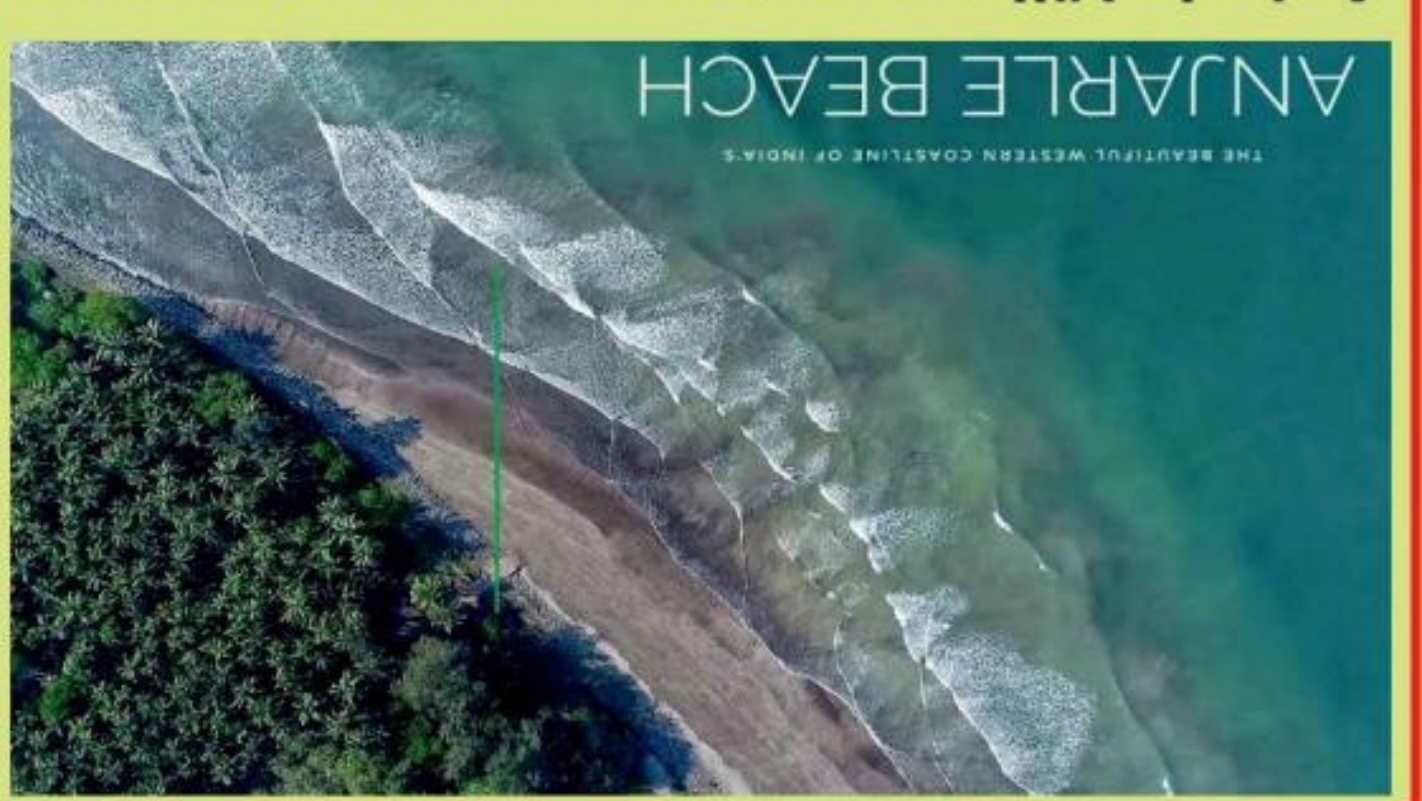
Undi Village 17°14'19.9"N 73°14'24.4"E



Dabhol Village 17°35'04"N 73°10'13"E



Narvan Village 17°19'30.9"N 73°14'24.4"E



Anjarle Village 17°52'31.1"N 73°04'47.1"E



Karde Village 17°45'47"N 73°07'33"E

Kokan Coastal Project

About Ratnagiri

Ratnagiri district is located in the south western part of Maharashtra state on the Arabian sea coast.

The surrounding area is bordered by the Sahyadri hills on the East and the Arabian Sea on the West. It forms a part of the greater tract known as Konkan. Total area of the district 8,2498 sq.kms. It ranges between 16° 30' to 18° 4' North and 73° 52' to 73° 53' East. As per 2001 census survey total population is 16,96,777, out of which 7,94,498 male & 9,02,279 females. It has a north-south length of about 225 km and average east-west extension of about 64 km. Satara, Sangli and Kolhapur districts are along the eastern border of the district, Raigad district in the north, the Arabian Sea in the west and Sindhudurg district in the south. Ratnagiri has nine tahsils; Mandangad, Dapoli, Khed, Chiplun, Guhagar,

Sangameshwar, Ratnagiri, Lanja and Rajapur. Ratnagiri is the district headquarters. There are three administrative subdivisions in the district namely Dapoli, Chiplun and Ratnagiri. It is having 1515 villages & 8102 habitations.

Geography:

Total geographical area of the district is 8249 sq.kms. Over 85% of the land surface in Ratnagiri district is hilly. All rivers in the district originate in the Sahyadri ranges and flow from east to west and merge in the Arabian Sea. The important rivers of the district are Vashisthi, Jagabudi Bav and Naringi. On the basis of the topography of the area, it can be divided into three major zones.

1. The hilly zone (Sahyadri)
2. Middle zone (Balat Patti)
3. Coastal zone (Khalati)

Hill area Zone (Sahyadri):

This area includes the western slopes of Sahyadri and extends up to about 10-15 km. It generally has medium to high altitude with high rainfall of about 3500 mm. A large area in this zone is covered by forest although it is deteriorating very fast. A substantial drop in temperature is experienced at places exposed to the rising western breeze.

Middle Zone:

This area lies between the coastal and hill areas and generally has a medium altitude. It is more accessible due to the Bombay-Goa-Highway as well as the Konkan railway. Area in this zone is also having moderately to highly undulating topography.

Coastal Zone

This zone extends to about 10-15 km from the seacoast and generally has low altitude and

about 2500 mm rainfall. Most of the activities in this area are connected with sea. This area contains numerous beaches, creeks, sea forts, harbors, hot water springs, caves.

Creeks:

There are six important creeks in the district: Jaitapur, Purnagad, Jayagad, Dabhol, Bankot. The whole district comes under high rainfall zone. District gets rain from North West monsoon. June to October is the main rainy season. The average rainfall is 3175 mm/year. Rainfall increases from coastal area (West) to hilly area (East).



Kokan Coastal Project



Hydrogeology:

Ratnagiri district is hilly, 85 % area of the district comes under hilly zone. There is very less potential for ground water development. Most of the wells in the district are domestic wells. Eastern portion of the district covered by Basalt and heavily eroded due to highly undulating topography & high rainfall. Weathered mantle is very thin, hence most of the wells in this area are seasonal. Average depth is about 8 to 10 mtrs. Western portion of the district is mostly covered by lateritic plateau. Laterite thickness ranges between 6 mtrs to 60 mtrs. Laterite is highly porous & permeable hence water table fluctuation is more. Wells in this zone are deep. Lithomargic clay located below laterite acts as an aquiclude. Existing bore well data indicates that deeper aquifer is also not promising. Average depth of

bore wells is about 50 to 60mtrs. Bore well success ratio is also poor & percentage of high yielding bores is very less.

Historical:

Birth places Honorable Lokamanya Tilak, Keshavsut, Sane Gurugi are in this districts. Thiba palace is most important palace in the district. Honorable king of manmar was kept in this palace.

Cultural activities:

Ganapati & holi are important festivals in the district. Hot water Spring : Hot water Springs are found in various parts of the district. Temperature of these springs ranges between 33.5 °c to 61°c. Unhavar, Aravali, Unhale, Rajavadi, Sangameshwar, are important hot springs.

Tourism

Ratnagiri district offers the most diverse attractions for the tourists. Ratnagiri is blessed with hills, sea shores, creeks, beautiful rivers, hot water springs, forests and water falls among many others.

Several Places to Visit :

Places of worship: Ganapatipule, Velneshwar, Marleshwar, Hedvi, Hatis, Parshuram [Chiplun], Rajapur

Caves: Panhalekazi, Sangameshwar

Palace: Thibaw Palace [Ratnagiri]

Sea Shores: Kelshi, Murud, Guhagar, Palshet, Ganpatipule, Velneshwar

Beaches: Mandovi [Gateway of Ratnagiri], Bhatye, Guhagar, Anjarla, Ganapatipule

Birth Places of eminent personalities: Ratnagiri, Malgund, Dapoli, Palgad

Forts: Bankot, Mandangad, Ambolgad, Jaigad, Ratnadurg, Mahipatgad

Sea Forts: Ratnadurg, Harne, Purnagad, Jaigad

Timeless Landscapes: Goval, Hatlot Ghat, Tivare Ghat, Amba

Water Falls: Parshuram, Prachitgad, Marleshwar



Kokan Coastal Project

VIBRANT NATURE

While traveling through Ratnagiri, you pass through various habitats such as the twisted Ghat roads, thick forests, high mountains, stretches of coasts, evergreen

mangroves, vast lateritic plateaus, wide rivers and the cherished sacred groves. Each habitat is diverse and has its own special features.

DAPOLI

The Dapoli town is situated at a height of 700-800 feet from sea level. Many tourists come here to relax and get away from the stressful life in the city. Because of the cold pleasant air, Dapoli is known as the 'Mahabaleshwar' of Konkan. On the seashores in Dapoli, thousands of seagulls visit every winter and you may spot

dolphins too. Many orchards have been developed here for the Agro tourism. Dapoli taluka is also famous for the fish market and fish auction on the Harne port, the historical forts, ancient ports, and architecture. The famous personalities such as Maharshi Karve, Wrangler Paranjape were born here.

GUHAGAR

Guhagar is a town in Ratnagiri district of Maharashtra. The place is situated on the banks of Vashishti river.

Guhagar is a place of religious importance. There are so many temples in the city. It is said that Guhagar city was saved by Goddess Durga from destructions. Hence, there is a temple of Durga at Guhagar. There are also temples of Shiva called Vyadeshwar, Velneshwar and Talkeshwar. The beach of Guhagar is an

attraction for most of the visitors. The beach has pure white sand. There are a lot of water sports available at the beach such as jet skis, banana rides, bumper rides, etc.

There are lot of good hotels. Also one can enjoy lip-smacking konkani food.

If you are travelling by train, Chiplun is the nearest railway station at a distance of 44 km from Guhagar. You can also go by road using private or public transport.



Kokan Coastal Project

RATNAGIRI

The reptile world here in Ratnagiri has an astounding variety of reptiles & amphibians. Along with many different reptile species such as snakes, lizards, skinks, you can spot the chameleon which can easily blend itself into the dense greenery is the specialty here.

RAJAPUR

Rajapur town situated on the banks of river Arjuna is 15 miles from the sea and 30 miles from Ratnagiri. It was the safest harbour and also a huge warehouse during the British period. There are many interesting places in Rajapur taluka such as the dapoliense forests, the kokani wadis in the

About 180 Km.

Ratnagiri is a coastal district of Maharashtra state, situated in the western coast of India. It has north-south length of about 180 km and average east-west extension of about 64 km. This district comes between 16.30 to 18.04 north latitudes and 73.02 to 73.53 east longitude.

Each year, the village of Velas, Aanjarle, Dabhol, Gaokhadi in **Ratnagiri District** in Maharashtra, bears witness to a truly heart-warming sight as thousands of newly hatched Olive Ridley turtles take their first steps towards the big blue sea.

greenery, Dhutpapeswar temple, the famous Ganga of Rajapur, all the beautiful waterfalls and the hot water springs near Unhale. Now days, Rajapuris becoming famous for the pre-historic Rock Carvings found here on the lateritic plateaus.

TOURISM

Tourism

Over 85% of the land surface in Ratnagiri district is hilly. All rivers in the district originate in the Sahyadri ranges and flow from east to west and merge in Arabian Sea.

It has 167 km long sea coast which contains many beaches, pats, and forts. 180 km long Sahyadri hill range, contains hills, hill forts, wild life & many places of scenic beauty. Number of creeks-ideal and safe for water sports, boating,

fishing, swimming, camping etc.

Hills, sea shores, creeks, rivers, hot water springs, forests, water falls, religious places attract tourists pilgrims from great distance.

Alphonsa Mangoes [Hapus], Cashewnut, Kokum, Coconut etc. are famous for their quality & taste. Characteristic Konkani cuisine, especially non-vegetarian dishes of fish, prawns and seafood are mouth-watering.

Travel Mode

How to reach

By Air	The nearest Airport is CST International Airport, Mumbai	
By Railway	Ratnagiri is connected to Mumbai in the North & Mangalore in the south by Konkani Railway.	
By Road	Ratnagiri well connected to Mumbai/ Pune/ Goa/ Kolhapur	
Mumbai – Ratnagiri	:	356Kms
Pune – Ratnagiri	:	365Kms
Goa – Ratnagiri	:	240Kms
Kolhapur – Ratnagiri	:	130Kms
Bangalore – Ratnagiri (via Kolhapur)	:	730Kms

